

Recombinant Human GYPA Protein (Met1-Glu91), C-His tagged

Cat. No. GYPA-4226H Lot. No. (See product label)

SPECIFICATION

Product Overview	Recombinant human GYPA (Met1-Glu91) fused with the C-terminal His tag was expressed in Mammalian cells.
Species	Human
Source	Mammalian Cells
ProteinLength	Met1-Glu91
Form	Lyophilized powder/frozen liquid
Molecular Mass	10.01 kDa
Endotoxin	< 1.0 EU/μg of the protein as determined by the LAL method.
Purity	>90% as determined by SDS-PAGE.
Notes	For research use only.
Storage	Use a manual defrost freezer and avoid repeated freeze thaw cycles. Store at 2 to 8 centigrade for one week. Store at -20 to -80 centigrade for twelve months from the date of receipt.
Storage Buffer	Supplied as solution form in PBS or lyophilized from PBS.

 Tel: 1-631-559-9269 1-516-512-3133

 Email: info@creative-biomart.com  Fax: 1-631-938-8127

 45-1 Ramsey Road, Shirley, NY 11967, USA

Reconstitution	Reconstitute in sterile water for a stock solution.
Shipping	They are shipped out with dry ice/blue ice unless customers require otherwise.
GENE INFORMATION	
Gene Name	GYPA glycophorin A (MNS blood group) [Homo sapiens (human)]
Official Symbol	GYPA
Synonyms	GYPA; glycophorin A (MNS blood group); glycophorin A (includes MN blood group), glycophorin A (MN blood group), MNS; glycophorin-A; CD235a; GPA; MN; glycophorin Mil; glycophorin MiV; glycophorin SAT; glycophorin Erik; glycophorin A, GPA; MN sialoglycoprotein; glycophorin Sta type C; sialoglycoprotein alpha; Mi.V glycoprotein (24 AA); glycophorin A (MN blood group); recombinant glycophorin A-B Miltenberger-DR; erythroid-lineage-specific membrane sialoglycoprotein; MNS; GPSAT; PAS-2; GPErik; HGpMiV; HGpMiXI; HGpSta (C);
Gene ID	2993
mRNA Refseq	NM_002099
Protein Refseq	NP_002090
MIM	617922
UniProt ID	P02724

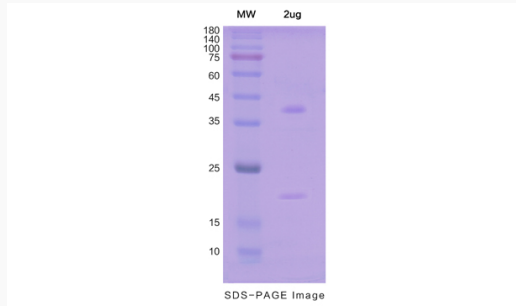
 Tel: 1-631-559-9269 1-516-512-3133

 Email: info@creative-biomart.com  Fax: 1-631-938-8127

 45-1 Ramsey Road, Shirley, NY 11967, USA



SDS-PAGE



Tel: 1-631-559-9269 1-516-512-3133

Email: info@creative-biomart.com Fax: 1-631-938-8127

45-1 Ramsey Road, Shirley, NY 11967, USA