

Recombinant Human GYPB Full Length Transmembrane protein, His-tagged

Cat. No. GYPB-4288H **Lot. No.** (See product label)

SPECIFICATION

Product Overview	Recombinant Human GYPB protein(P06028)(20-91aa), fused to N-terminal His tag, was expressed in E. coli.
Species	Human
Source	E.coli
ProteinLength	20-91aa
Form	If the delivery form is liquid, the default storage buffer is Tris/PBS-based buffer, 5%-50% glycerol. If the delivery form is lyophilized powder, the buffer before lyophilization is Tris/PBS-based buffer, 6% Trehalose, pH 8.0.
Molecular Mass	10.5 kDa
AA Sequence	LSTTEVAMHTSTSSSVTKSYISSQTNGETGQLVHRFTVPAPVVIIILICVMAGIIGTILLI SYSIRRLIKA
Purity	Greater than 85% as determined by SDS-PAGE.
Storage	Store at -20°C/-80°C upon receipt, aliquoting is necessary for mutiple use. Avoid repeated freeze-thaw cycles.

 Tel: 1-631-559-9269 1-516-512-3133

 Email: info@creative-biomart.com  Fax: 1-631-938-8127

 45-1 Ramsey Road, Shirley, NY 11967, USA

Reconstitution

Please reconstitute protein in deionized sterile water to a concentration of 0.1-1.0 mg/mL. We recommend to add 5-50% of glycerol (final concentration) and aliquot for long-term storage at -20°C/-80°C. Our default final concentration of glycerol is 50%.

GENE INFORMATION

Gene Name

GYPB glycophorin B (MNS blood group) [*Homo sapiens*]

Official Symbol

GYPB

Synonyms

GYPB; glycophorin B (MNS blood group); glycophorin B (includes Ss blood group) , glycophorin B (Ss blood group) , MNS; glycophorin-B; CD235b; GPB; SS; Ss blood group; glycophorin MiX; glycophorin HeP2; glycophorin MiVI; glycophorin MiIII; sialoglycoprotein delta; SS-active sialoglycoprotein; MNS; PAS-3; GPB.NY; HGpMiX; GpMiIII; HGpMiVI; GYPHe.NY; HGpMiIII;

Gene ID

2994

mRNA Refseq

NM_002100

Protein Refseq

NP_002091

UniProt ID

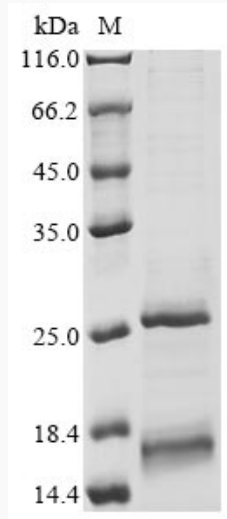
P06028

 Tel: 1-631-559-9269 1-516-512-3133

 Email: info@creative-biomart.com  Fax: 1-631-938-8127

 45-1 Ramsey Road, Shirley, NY 11967, USA

SDS-PAGE



 Tel: 1-631-559-9269 1-516-512-3133

 Email: info@creative-biomart.com  Fax: 1-631-938-8127

 45-1 Ramsey Road, Shirley, NY 11967, USA