

# Recombinant Human GYPC Protein (Met1-Ile128), N-GST tagged

**Cat. No.** GYPC-1162H    **Lot. No.** (See product label)

## SPECIFICATION

<b>Product Overview</b>	Recombinant Human CD236/GYPC (Met1-Ile128) fused with the N-GST tag was expressed in E. coli.
<b>Species</b>	Human
<b>Source</b>	E.coli
<b>ProteinLength</b>	Met1-Ile128
<b>Form</b>	Lyophilized powder/frozen liquid
<b>Molecular Mass</b>	40.65 kDa
<b>Purity</b>	>90% as determined by SDS-PAGE.
<b>Notes</b>	For research use only.
<b>Storage</b>	Use a manual defrost freezer and avoid repeated freeze thaw cycles. Store at 2 to 8 centigrade for one week. Store at -20 to -80 centigrade for twelve months from the date of receipt.
<b>Storage Buffer</b>	0.01M PBS, pH 7.4, 0.02% NLS
<b>Reconstitution</b>	Reconstitute in sterile water for a stock solution.

 Tel: 1-631-559-9269    1-516-512-3133

 Email: [info@creative-biomart.com](mailto:info@creative-biomart.com)     Fax: 1-631-938-8127

 45-1 Ramsey Road, Shirley, NY 11967, USA

**Shipping** They are shipped out with dry ice/blue ice unless customers require otherwise.

## GENE INFORMATION

**Gene Name** GYPC glycophorin C (Gerbich blood group) [ Homo sapiens (human) ]

**Official Symbol** GYPC

**Synonyms** GYPC; glycophorin C (Gerbich blood group); glycophorin-C; CD236; CD236R; Ge; GPC; GYPD; glycophorin-D; glycoconnectin; glycoprotein beta; sialoglycoprotein D; GE; GPD; PAS-2; MGC117309; MGC126191; MGC126192;

**Gene ID** 2995

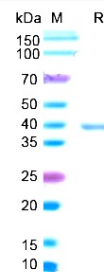
**mRNA Refseq** NM\_001256584

**Protein Refseq** NP\_001243513

**MIM** 110750

**UniProt ID** P04921

## SDS-PAGE



 Tel: 1-631-559-9269 1-516-512-3133

 Email: [info@creative-biomart.com](mailto:info@creative-biomart.com)  Fax: 1-631-938-8127

 45-1 Ramsey Road, Shirley, NY 11967, USA