

Recombinant Human GYPC Protein, Myc/DDK-tagged, C13 and N15-labeled

Cat. No. GYPC-2296H **Lot. No.** (See product label)

SPECIFICATION

Product Overview	GYPC MS Standard C13 and N15-labeled recombinant protein (NP_058131) with a C-terminal MYC/DDK tag, was expressed in HEK293 cells.
Species	Human
Source	HEK293
Description	Glycophorin C (GYPC) is an integral membrane glycoprotein. It is a minor species carried by human erythrocytes, but plays an important role in regulating the mechanical stability of red cells. A number of glycophorin C mutations have been described. The Gerbich and Yus phenotypes are due to deletion of exon 3 and 2, respectively. The Webb and Duch antigens, also known as glycophorin D, result from single point mutations of the glycophorin C gene. The glycophorin C protein has very little homology with glycophorins A and B. Alternate splicing results in multiple transcript variants.
Molecular Mass	11.7 kDa
AA Sequence	MWSTRSPNSTAWPLSLEPDPGMSGWPDGRMETSTPTIMDIVVIAGVIAAVAILVLSL LFVMLRYMYRHKGTYHTNEAKGTEFAESADAALQGDPALQDAGDSSRKEYFITRTR PLEQKLISEEDLAANDILDYKDDDDKV
Purity	> 80% as determined by SDS-PAGE and Coomassie blue staining

 Tel: 1-631-559-9269 1-516-512-3133

 Email: info@creative-biomart.com  Fax: 1-631-938-8127

 45-1 Ramsey Road, Shirley, NY 11967, USA

Stability	Stable for 3 months from receipt of products under proper storage and handling conditions.
Storage	Store at -80 centigrade. Avoid repeated freeze-thaw cycles.
Concentration	50 µg/mL as determined by BCA
Storage Buffer	100 mM glycine, 25 mM Tris-HCl, pH 7.3.

GENE INFORMATION

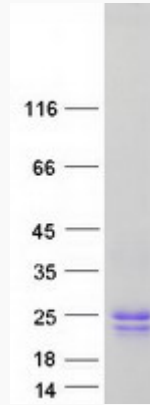
Gene Name	GYPC glycophorin C (Gerbich blood group) [Homo sapiens (human)]
Official Symbol	GYPC
Synonyms	GYPC; glycophorin C (Gerbich blood group); glycophorin-C; CD236; CD236R; Ge; GPC; GYPD; glycophorin-D; glycoconnectin; glycoprotein beta; sialoglycoprotein D; GE; GPD; PAS-2; MGC117309; MGC126191; MGC126192;
Gene ID	2995
mRNA Refseq	NM_016815
Protein Refseq	NP_058131
MIM	110750
UniProt ID	P04921

 Tel: 1-631-559-9269 1-516-512-3133

 Email: info@creative-biomart.com  Fax: 1-631-938-8127

 45-1 Ramsey Road, Shirley, NY 11967, USA

SDS-PAGE



 Tel: 1-631-559-9269 1-516-512-3133

 Email: info@creative-biomart.com  Fax: 1-631-938-8127

 45-1 Ramsey Road, Shirley, NY 11967, USA