

Recombinant Human GYPC Protein, GST-tagged

Cat. No. GYPC-4512H Lot. No. (See product label)

SPECIFICATION

Product Overview	Human GYPC partial ORF (NP_002092, 1 a.a. - 57 a.a.) recombinant protein with GST-tag at N-terminal.
Species	Human
Source	Wheat Germ
Description	Glycophorin C (GYPC) is an integral membrane glycoprotein. It is a minor species carried by human erythrocytes, but plays an important role in regulating the mechanical stability of red cells. A number of glycophorin C mutations have been described. The Gerbich and Yus phenotypes are due to deletion of exon 3 and 2, respectively. The Webb and Duch antigens, also known as glycophorin D, result from single point mutations of the glycophorin C gene. The glycophorin C protein has very little homology with glycophorins A and B. [provided by RefSeq]
Molecular Mass	32.01 kDa
AA Sequence	MWSTRSPNSTAWPLSLEPDPGMASASTTMHTTTIAEPDPGMSGWPDGRMETSTPTIM
Applications	Enzyme-linked Immunoabsorbent Assay Western Blot (Recombinant protein) Antibody Production Protein Array

 Tel: 1-631-559-9269 1-516-512-3133

 Email: info@creative-biomart.com  Fax: 1-631-938-8127

 45-1 Ramsey Road, Shirley, NY 11967, USA

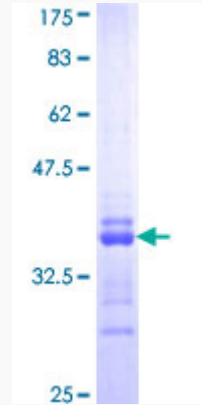
Notes	Best use within three months from the date of receipt of this protein.
Storage	Store at -8 centigrade. Aliquot to avoid repeated freezing and thawing.
Storage Buffer	50 mM Tris-HCl, 10 mM reduced Glutathione, pH=8.0 in the elution buffer.
GENE INFORMATION	
Gene Name	GYPC glycophorin C (Gerbich blood group) [Homo sapiens]
Official Symbol	GYPC
Synonyms	GYPC; glycophorin C (Gerbich blood group); glycophorin-C; CD236; CD236R; Ge; GPC; GYPD; glycophorin-D; glycoconnectin; glycoprotein beta; sialoglycoprotein D; GE; GPD; PAS-2; MGC117309; MGC126191; MGC126192;
Gene ID	2995
mRNA Refseq	NM_001256584
Protein Refseq	NP_001243513
UniProt ID	P04921

 Tel: 1-631-559-9269 1-516-512-3133

 Email: info@creative-biomart.com  Fax: 1-631-938-8127

 45-1 Ramsey Road, Shirley, NY 11967, USA

**Quality Control
Testing**



12.5% SDS-PAGE Stained with Coomassie Blue.

 Tel: 1-631-559-9269 1-516-512-3133

 Email: info@creative-biomart.com  Fax: 1-631-938-8127

 45-1 Ramsey Road, Shirley, NY 11967, USA