

Recombinant Human GYS2 protein, His-tagged

Cat. No. GYS2-4514H Lot. No. (See product label)

SPECIFICATION

Product Overview	Recombinant GYS2 protein (Met1-Val377), fused to His-tag at N-terminus, was expressed in E.coli.
Species	Human
Source	E.coli
ProteinLength	377
Description	The protein encoded by this gene, liver glycogen synthase, catalyzes the rate-limiting step in the synthesis of glycogen-the transfer of a glucose molecule from UDP-glucose to a terminal branch of the glycogen molecule. Mutations in this gene cause glycogen storage disease type 0 (GSD-0)-a rare type of early childhood fasting hypoglycemia with decreased liver glycogen content.
Form	20mM Tris, 150mM NaCl, pH8.0, containing 0.01% SKL, 5% Trehalose.
Molecular Mass	47 kDa
Purity	>95%
Applications	Positive Control; Immunogen; SDS-PAGE; WB.
Storage	Avoid repeated freeze/thaw cycles. Store at 2-8 centigrade for one month. Aliquot and store at -80 centigrade for 12 months.

 Tel: 1-631-559-9269 1-516-512-3133

 Email: info@creative-biomart.com  Fax: 1-631-938-8127

 45-1 Ramsey Road, Shirley, NY 11967, USA

Concentration	200 µg/mL
----------------------	-----------

Reconstitution	It is recommended that sterile water be added to the vial to prepare a stock solution of 0.2 mg/ml. Centrifuge the vial at 4 centigrade before opening to recover the entire contents.
-----------------------	--

GENE INFORMATION

Gene Name	GYS2
------------------	------

Official Symbol	GYS2
------------------------	------

Synonyms	GYS2
-----------------	------

Gene ID	2998
----------------	------

mRNA Refseq	NM_021957.4
--------------------	-------------

Protein Refseq	NP_068776.2
-----------------------	-------------

MIM	138571
------------	--------

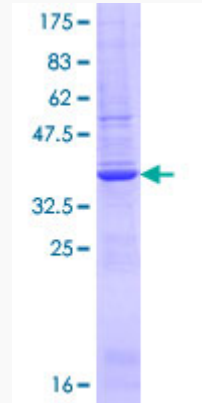
UniProt ID	P54840
-------------------	--------

 Tel: 1-631-559-9269 1-516-512-3133

 Email: info@creative-biomart.com  Fax: 1-631-938-8127

 45-1 Ramsey Road, Shirley, NY 11967, USA

SDS-PAGE of GYS2-4514H



 Tel: 1-631-559-9269 1-516-512-3133

 Email: info@creative-biomart.com  Fax: 1-631-938-8127

 45-1 Ramsey Road, Shirley, NY 11967, USA