

Recombinant Full Length Human GZMA Protein, C-Flag-tagged

Cat. No. GZMA-1713HFL Lot. No. (See product label)

SPECIFICATION

Product Overview	Recombinant Full Length Human GZMA Protein, fused to Flag-tag at C-terminus, was expressed in Mammalian cells.
Species	Human
Source	Mammalian Cells
Description	Cytolytic T lymphocytes (CTL) and natural killer (NK) cells share the remarkable ability to recognize, bind, and lyse specific target cells. They are thought to protect their host by lysing cells bearing on their surface 'nonself' antigens, usually peptides or proteins resulting from infection by intracellular pathogens. The protein described here is a T cell- and natural killer cell-specific serine protease that may function as a common component necessary for lysis of target cells by cytotoxic T lymphocytes and natural killer cells.
Form	25 mM Tris HCl, pH 7.3, 100 mM glycine, 10% glycerol.
Molecular Mass	28.8 kDa
AA Sequence	MRNSYRFLASSLSVVVSLLLIPEDVCEKIIGGNEVTPHSRPYMVLLSLDRKTICAGALI AKDWVLTAHC NLNKRSQVILGAHSITREEPTKQIMLVKKEFPYPCYDPATREGDLK LLQLTEKAKINKYVTLHLPKKGD DVKPGTMCQVAGWGRTHNSASWSDTLREVNITII DRKVCNDRNHYNFNPVIGMNMVCAGSLRGGRDSCNG DSGSPLLCEGVFRGVTSFGLENKCGDPRGPGVYILLSKKHNLNWIIMTIKGAVTRTRPL EQKLISEEDLAANDILDYKDDDDKV

 Tel: 1-631-559-9269 1-516-512-3133

 Email: info@creative-biomart.com  Fax: 1-631-938-8127

 45-1 Ramsey Road, Shirley, NY 11967, USA

Purity	> 80% as determined by SDS-PAGE and Coomassie blue staining.
Stability	Stable for 12 months from the date of receipt of the product under proper storage and handling conditions. Avoid repeated freeze-thaw cycles.
Storage	Store at -80 centigrade.
Concentration	>50 ug/mL as determined by microplate BCA method.
Preparation	Recombinant protein was captured through anti-DDK affinity column followed by conventional chromatography steps.
Protein Families	Druggable Genome, Protease, Secreted Protein
Protein Pathways	Neuroactive ligand-receptor interaction
Full Length	Full L.

GENE INFORMATION

Gene Name	GZMA granzyme A [Homo sapiens (human)]
Official Symbol	GZMA
Synonyms	HFSP; CTLA3
Gene ID	3001
mRNA Refseq	NM_006144.4
Protein Refseq	NP_006135.2

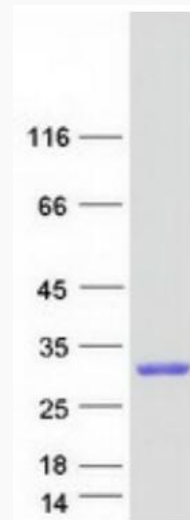
 Tel: 1-631-559-9269 1-516-512-3133

 Email: info@creative-biomart.com  Fax: 1-631-938-8127

 45-1 Ramsey Road, Shirley, NY 11967, USA

MIM 140050

UniProt ID P12544



Coomassie blue staining of purified GZMA protein.

Tel: 1-631-559-9269 1-516-512-3133

Email: info@creative-biomart.com Fax: 1-631-938-8127

45-1 Ramsey Road, Shirley, NY 11967, USA