

Recombinant Full Length Human GZMB protein, His & T7-tagged

Cat. No. GZMB-2634H **Lot. No.** (See product label)

SPECIFICATION

Product Overview	Recombinant Human GZMB aa. (Ile21~Tyr247 (Accession # P10144)) fused with N-terminal His & T7 tag was produced in E. coli cells.
Species	Human
Source	E.coli
ProteinLength	21-247 aa
Description	This gene encodes a member of the granzyme subfamily of proteins, part of the peptidase S1 family of serine proteases. The encoded preproprotein is secreted by natural killer (NK) cells and cytotoxic T lymphocytes (CTLs) and proteolytically processed to generate the active protease, which induces target cell apoptosis. This protein also processes cytokines and degrades extracellular matrix proteins, and these roles are implicated in chronic inflammation and wound healing. Expression of this gene may be elevated in human patients with cardiac fibrosis.
Form	Freeze-dried powder
Molecular Mass	Predicted Molecular Mass: 29.4kDa
Endotoxin	<1.0EU per 1g (determined by the LAL method)
Purity	>95%

 Tel: 1-631-559-9269 1-516-512-3133

 Email: info@creative-biomart.com  Fax: 1-631-938-8127

 45-1 Ramsey Road, Shirley, NY 11967, USA

Characteristic	The isoelectric point is 9.7.
Applications	SDS-PAGE; WB; ELISA; IP
Stability	The thermal stability is described by the loss rate. The loss rate was determined by accelerated thermal degradation test, that is, incubate the protein at 37°C for 48h, and no obvious degradation and precipitation were observed. The loss rate is less than 5% within the expiration date under appropriate storage condition.
Storage	Avoid repeated freeze/thaw cycles. Store at 2-8°C for one month. Aliquot and store at -80°C for 12 months.
Storage buffer	Supplied as lyophilized form in PBS, pH7.4, containing 5% trehalose, 0.01% sarcosyl.
Reconstitution	Reconstitute in sterile PBS, pH7.2-pH7.4

GENE INFORMATION

Gene Name	GZMB granzyme B [Homo sapiens (human)]
Official Symbol	GZMB
Synonyms	GZMB; granzyme B; C11; HLP; CCPI; CGL1; CSPB; SECT; CGL-1; CSP-B; CTLA1; CTSSL1; granzyme B; T-cell serine protease 1-3E; cathepsin G-like 1; cytotoxic T-lymphocyte proteinase 2; cytotoxic serine protease B; fragmentin 2; granzyme B (granzyme 2, cytotoxic T-lymphocyte-associated serine esterase 1); human lymphocyte protein
Gene ID	3002
mRNA Refseq	NM_004131.5

 Tel: 1-631-559-9269 1-516-512-3133

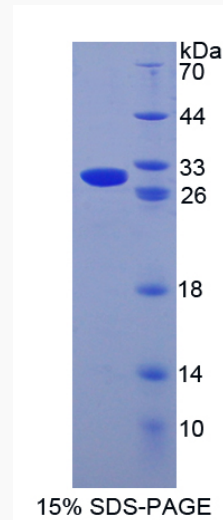
 Email: info@creative-biomart.com  Fax: 1-631-938-8127

 45-1 Ramsey Road, Shirley, NY 11967, USA

Protein Refseq NP_004122.2

UniProt ID P10144

SDS-PAGE



 Tel: 1-631-559-9269 1-516-512-3133

 Email: info@creative-biomart.com  Fax: 1-631-938-8127

 45-1 Ramsey Road, Shirley, NY 11967, USA