

## Recombinant Full Length Human GZMB Protein (Ala18-Tyr247), C-His tagg

Cat. No. GZMB-3249H Lot. No. (See product label)

### SPECIFICATION

<b>Product Overview</b>	Recombinant human GZMB (Ala18-Tyr247) protein fused with the C-His tag was expressed in E. coli.
<b>Species</b>	Human
<b>Source</b>	E.coli
<b>ProteinLength</b>	18-247 aa
<b>Molecular Mass</b>	28.91 kDa
<b>Purity</b>	>90 % as determined by SDS-PAGE.
<b>Notes</b>	For research use only.
<b>Storage</b>	Use a manual defrost freezer and avoid repeated freeze thaw cycles. Store at 2 to 8 centigrade for one week. Store at -20 to -80 centigrade for twelve months from the date of receipt.
<b>Storage Buffer</b>	Supplied as solution form in PBS pH 7.5 or lyophilized from PBS pH 7.5.
<b>Reconstitution</b>	Reconstitute in sterile water for a stock solution.
<b>Shipping</b>	In general, proteins are provided as lyophilized powder/frozen liquid. They are

 Tel: 1-631-559-9269 1-516-512-3133

 Email: [info@creative-biomart.com](mailto:info@creative-biomart.com)  Fax: 1-631-938-8127

 45-1 Ramsey Road, Shirley, NY 11967, USA

shipped out with dry ice/blue ice unless customers require otherwise.

## GENE INFORMATION

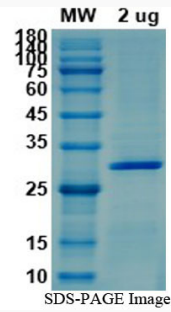
<b>Gene Name</b>	GZMB granzyme B (granzyme 2, cytotoxic T-lymphocyte-associated serine esterase 1) [ Homo sapiens (human) ]
<b>Official Symbol</b>	GZMB
<b>Synonyms</b>	GZMB; granzyme B (granzyme 2, cytotoxic T-lymphocyte-associated serine esterase 1); CSPB, CTLA1; granzyme B; cathepsin G like 1; CCPI; CGL 1; CGL1; CSP B; CTSG1; cytotoxic serine protease B; fragmentin 2; HLP; SECT; T cell serine protease 1 3E; C11; CTLA-1; fragmentin-2; cathepsin G-like 1; human lymphocyte protein; T-cell serine protease 1-3E; cytotoxic T-lymphocyte proteinase 2; CSPB; CGL-1; CSP-B; CTLA1;
<b>Gene ID</b>	3002
<b>mRNA Refseq</b>	NM_004131
<b>Protein Refseq</b>	NP_004122
<b>MIM</b>	123910
<b>UniProt ID</b>	P10144

 Tel: 1-631-559-9269 1-516-512-3133

 Email: [info@creative-biomart.com](mailto:info@creative-biomart.com)  Fax: 1-631-938-8127

 45-1 Ramsey Road, Shirley, NY 11967, USA

SDS-PAGE



 Tel: 1-631-559-9269 1-516-512-3133

 Email: [info@creative-biomart.com](mailto:info@creative-biomart.com)  Fax: 1-631-938-8127

 45-1 Ramsey Road, Shirley, NY 11967, USA