

Active Recombinant Human GZMB Protein (19-247aa), C-His tagged

Cat. No. GZMB-33H **Lot. No.** (See product label)

SPECIFICATION

Product Overview	Recombinant human GZMB (19-247aa), fused to His-tag at C-terminus, was expressed in insect cell and purified by using conventional chromatography techniques.
Species	Human
Source	Insect Cells
ProteinLength	19-247 aa
Description	This gene encodes a member of the granzyme subfamily of proteins, part of the peptidase S1 family of serine proteases. The encoded preproprotein is secreted by natural killer (NK) cells and cytotoxic T lymphocytes (CTLs) and proteolytically processed to generate the active protease, which induces target cell apoptosis. This protein also processes cytokines and degrades extracellular matrix proteins, and these roles are implicated in chronic inflammation and wound healing. Expression of this gene may be elevated in human patients with cardiac fibrosis.
Form	Liquid
Bio-activity	> 7, 000 pmol/min/μg, and is defined as the amount of enzyme that cleave 1pmole of Boc-Ala-Ala-Asp-SBzl at 37 centigrade.
Molecular Mass	26.5 kDa (235 aa)

 Tel: 1-631-559-9269 1-516-512-3133

 Email: info@creative-biomart.com  Fax: 1-631-938-8127

 45-1 Ramsey Road, Shirley, NY 11967, USA

AA Sequence	GEIIGGHEAKPHSRPYMAYLMIWDQKSLKRCGGFLIRDDFVLTAAHCWGSSINVTLG AHNIKEQEPTQQFIPVKRPIHPAYNPKNFSNDIMLLQLERKAKRTRAVQPLRLPSNK AQVKPGQTCSVAGWGQTAPLGKHSHTLQEVMKMTVQEDRKCESDLRHYYDSTIELC VGDPEIKKTSFKGDSGGPLVCNKVAQGIVSYGRNNGMPRACTKVSSFVHWIKKTM KRY< HHHHHH>
Endotoxin	< 1 EU/μg of protein (determined by LAL method)
Purity	> 95 % by SDS-PAGE
Applications	SDS-PAGE, Enzyme Activity
Storage	Can be stored at +2 to +8 centigrade for 1 week. For long term storage, aliquot and store at -20 to -80 centigrade. Avoid repeated freezing and thawing cycles.
Concentration	0.5 mg/mL (determined by absorbance at 280nm)
Storage Buffer	Phosphate-Buffered Saline (pH 7.4) containing 20 % glycerol, 1mM DTT.

GENE INFORMATION

Gene Name	GZMB granzyme B [Homo sapiens (human)]
Official Symbol	GZMB
Synonyms	GZMB; granzyme B; C11; HLP; CCPI; CGL1; CSPB; SECT; CGL-1; CSP-B; CTLA1; CTSSL1; granzyme B; T-cell serine protease 1-3E; cathepsin G-like 1; cytotoxic T-lymphocyte proteinase 2; cytotoxic serine protease B; fragmentin 2; granzyme B (granzyme 2, cytotoxic T-lymphocyte-associated serine esterase 1); human lymphocyte protein; EC 3.4.21.79

 Tel: 1-631-559-9269 1-516-512-3133

 Email: info@creative-biomart.com  Fax: 1-631-938-8127

 45-1 Ramsey Road, Shirley, NY 11967, USA

Gene ID 3002

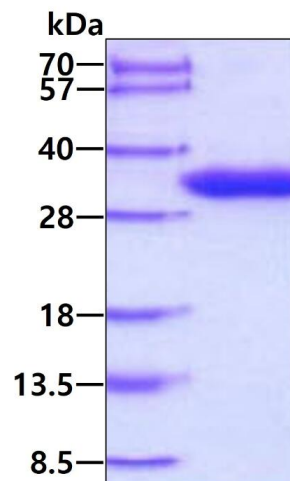
mRNA Refseq NM_004131

Protein Refseq NP_004122

MIM 123910

UniProt ID P10144

SDS-PAGE



3 μ g by SDS-PAGE under reducing condition and visualized by coomassie blue stain.

 Tel: 1-631-559-9269 1-516-512-3133

 Email: info@creative-biomart.com  Fax: 1-631-938-8127

 45-1 Ramsey Road, Shirley, NY 11967, USA