

## Active Recombinant Human GZMB Protein, His-tagged

Cat. No. GZMB-40H Lot. No. (See product label)

### SPECIFICATION

<b>Product Overview</b>	Recombinant Human GZMB Protein, fused to His-tag, was expressed in Baculovirus.
<b>Species</b>	Human
<b>Source</b>	Insect Cells
<b>ProteinLength</b>	19-247aa
<b>Description</b>	This gene encodes a member of the granzyme subfamily of proteins, part of the peptidase S1 family of serine proteases. The encoded preproprotein is secreted by natural killer (NK) cells and cytotoxic T lymphocytes (CTLs) and proteolytically processed to generate the active protease, which induces target cell apoptosis. This protein also processes cytokines and degrades extracellular matrix proteins, and these roles are implicated in chronic inflammation and wound healing. Expression of this gene may be elevated in human patients with cardiac fibrosis.
<b>Form</b>	Liquid in. Phosphate-Buffered Saline (pH 7.4) containing 20% glycerol, 1mM DTT.
<b>Bio-activity</b>	Specific activity is > 7,000pmol/min/ug, and is defined as the amount of enzyme that cleave 1pmole of Boc-Ala-Ala-Asp-SBzl at 37C.
<b>Molecular Mass</b>	26.5 kDa (235aa)
<b>Endotoxin</b>	< 1 EU per 1ug of protein (determined by LAL method)

 Tel: 1-631-559-9269 1-516-512-3133

 Email: [info@creative-biomart.com](mailto:info@creative-biomart.com)  Fax: 1-631-938-8127

 45-1 Ramsey Road, Shirley, NY 11967, USA

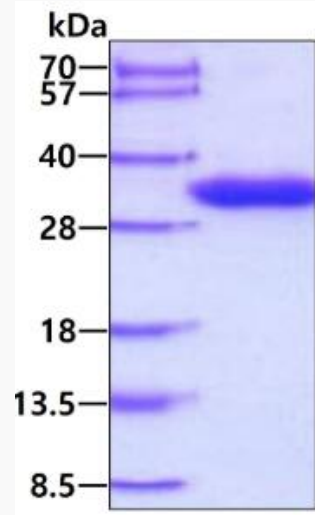
<b>Purity</b>	> 95% by SDS-PAGE
<b>Applications</b>	SDS-PAGE, Enzyme Activity
<b>Notes</b>	For research use only. This product is not intended or approved for human, diagnostics or veterinary use.
<b>Storage</b>	Can be stored at 2 centigrade to 8 centigrade for 1 week. For long term storage, aliquot and store at -20 centigrade to -80 centigrade. Avoid repeated freezing and thawing cycles.
<b>Concentration</b>	0.5mg/ml (determined by absorbance at 280nm)
<b>GENE INFORMATION</b>	
<b>Gene Name</b>	GZMB granzyme B [ Homo sapiens (human) ]
<b>Official Symbol</b>	GZMB
<b>Synonyms</b>	C11; HLP; CCPI; CGL1; CSPB; SECT; CGL-1; CSP-B; CTLA1; CTSSL1
<b>Gene ID</b>	3002
<b>mRNA Refseq</b>	NM_004131.6
<b>Protein Refseq</b>	NP_004122.2
<b>MIM</b>	123910
<b>UniProt ID</b>	P10144

 Tel: 1-631-559-9269 1-516-512-3133

 Email: [info@creative-biomart.com](mailto:info@creative-biomart.com)  Fax: 1-631-938-8127

 45-1 Ramsey Road, Shirley, NY 11967, USA

SDS-PAGE



3ug by SDS-PAGE under reducing condition and visualized by coomassie blue stain.

 Tel: 1-631-559-9269 1-516-512-3133

 Email: [info@creative-biomart.com](mailto:info@creative-biomart.com)  Fax: 1-631-938-8127

 45-1 Ramsey Road, Shirley, NY 11967, USA