

Recombinant Full Length Human GZMB protein, His-tagged

Cat. No. GZMB-5421H Lot. No. (See product label)

SPECIFICATION

Product Overview	Recombinant Human GZMB protein(P10144)(21-247aa), fused to N-terminal His tag, was expressed in Yeast.
Species	Human
Source	Yeast
ProteinLength	21-247 aa
Form	If the delivery form is liquid, the default storage buffer is Tris/PBS-based buffer, 5%-50% glycerol. If the delivery form is lyophilized powder, the buffer before lyophilization is Tris/PBS-based buffer, 6% Trehalose, pH 8.0.
Molecular Mass	27.5 kDa
Purity	Greater than 90% as determined by SDS-PAGE.
Storage	Store at -20°C/-80°C upon receipt, aliquoting is necessary for mutiple use. Avoid repeated freeze-thaw cycles.
Reconstitution	Please reconstitute protein in deionized sterile water to a concentration of 0.1-1.0 mg/mL. We recommend to add 5-50% of glycerol (final concentration) and aliquot for long-term storage at -20°C/-80°C. Our default final concentration of glycerol is 50%.

GENE INFORMATION

 Tel: 1-631-559-9269 1-516-512-3133

 Email: info@creative-biomart.com  Fax: 1-631-938-8127

 45-1 Ramsey Road, Shirley, NY 11967, USA

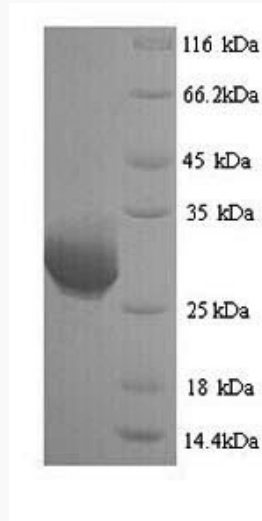
Gene Name	GZMB granzyme B (granzyme 2, cytotoxic T-lymphocyte-associated serine esterase 1) [Homo sapiens]
Official Symbol	GZMB
Synonyms	GZMB; granzyme B (granzyme 2, cytotoxic T-lymphocyte-associated serine esterase 1); CSPB, CTLA1; granzyme B; cathepsin G like 1; CCPI; CGL 1; CGL1; CSP B; CTSSL1; cytotoxic serine protease B; fragmentin 2; HLP; SECT; T cell serine protease 1 3E; C11; CTLA-1; fragmentin-2; cathepsin G-like 1; human lymphocyte protein; T-cell serine protease 1-3E; cytotoxic T-lymphocyte proteinase 2; CSPB; CGL-1; CSP-B; CTLA1;
Gene ID	3002
mRNA Refseq	NM_004131
Protein Refseq	NP_004122
MIM	123910
UniProt ID	P10144

 Tel: 1-631-559-9269 1-516-512-3133

 Email: info@creative-biomart.com  Fax: 1-631-938-8127

 45-1 Ramsey Road, Shirley, NY 11967, USA

SDS-PAGE



 Tel: 1-631-559-9269 1-516-512-3133

 Email: info@creative-biomart.com  Fax: 1-631-938-8127

 45-1 Ramsey Road, Shirley, NY 11967, USA