

## Recombinant Human GZMH protein, His & T7-tagged

Cat. No. GZMH-1856H Lot. No. (See product label)

### SPECIFICATION

<b>Product Overview</b>	Recombinant Human GZMH aa. (Glu19~Leu246 (Accession # P20718)) fused with N-terminal His & T7 tag was produced in E. coli cells.
<b>Species</b>	Human
<b>Source</b>	E.coli
<b>ProteinLength</b>	Glu19~Leu246
<b>Description</b>	<p>This gene encodes a member of the peptidase S1 family of serine proteases. Alternative splicing results in multiple transcript variants, at least one of which encodes a preproprotein that is proteolytically processed to generate a chymotrypsin-like protease. This protein is reported to be constitutively expressed in the NK (natural killer) cells of the immune system and may play a role in the cytotoxic arm of the innate immune response by inducing target cell death and by directly cleaving substrates in pathogen-infected cells. This gene is present in a gene cluster with another member of the granzyme subfamily on chromosome 14.</p>
<b>Form</b>	Freeze-dried powder
<b>Molecular Mass</b>	Predicted Molecular Mass: 29.2kDa
<b>Endotoxin</b>	<1.0EU per 1ug (determined by the LAL method)
<b>Purity</b>	>95%

 Tel: 1-631-559-9269 1-516-512-3133

 Email: [info@creative-biomart.com](mailto:info@creative-biomart.com)  Fax: 1-631-938-8127

 45-1 Ramsey Road, Shirley, NY 11967, USA

<b>Applications</b>	SDS-PAGE; WB; ELISA; IP.
<b>Stability</b>	The thermal stability is described by the loss rate. The loss rate was determined by accelerated thermal degradation test, that is, incubate the protein at 37°C for 48h, and no obvious degradation and precipitation were observed. The loss rate is less than 5% within the expiration date under appropriate storage condition.
<b>Storage</b>	Avoid repeated freeze/thaw cycles. Store at 2-8°C for one month. Aliquot and store at -80°C for 12 months.
<b>Storage buffer</b>	Supplied as lyophilized form in PBS, pH7.4, containing 5% trehalose, 0.01% sarcosyl.
<b>Reconstitution</b>	Reconstitute in sterile PBS, pH7.2-pH7.4.
<b>Isoelectric Point</b>	9.9

## GENE INFORMATION

<b>Gene Name</b>	GZMH granzyme H [ Homo sapiens (human) ]
<b>Official Symbol</b>	GZMH
<b>Synonyms</b>	GZMH; granzyme H; CCP-X; CGL-2; CSP-C; CTLA1; CTSG2; cathepsin G-like 2, protein h-CCPX; cytotoxic T-lymphocyte proteinase; cytotoxic T-lymphocyte-associated serine esterase 1; cytotoxin serine protease-C
<b>Gene ID</b>	2999
<b>mRNA Refseq</b>	NM_001270781.1
<b>Protein Refseq</b>	NP_001257710.1

 Tel: 1-631-559-9269 1-516-512-3133

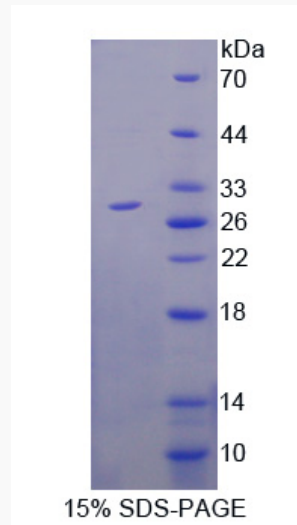
 Email: [info@creative-biomart.com](mailto:info@creative-biomart.com)  Fax: 1-631-938-8127

 45-1 Ramsey Road, Shirley, NY 11967, USA

UniProt ID

P20718

SDS-PAGE



 Tel: 1-631-559-9269 1-516-512-3133

 Email: [info@creative-biomart.com](mailto:info@creative-biomart.com)  Fax: 1-631-938-8127

 45-1 Ramsey Road, Shirley, NY 11967, USA