

Recombinant Human GZMH Protein, GST-tagged

Cat. No. GZMH-4521H Lot. No. (See product label)

SPECIFICATION

Product Overview Human GZMH full-length ORF (NP_219491.1, 1 a.a. - 246 a.a.) recombinant protein with GST-tag at N-terminal.

Species Human

Source Wheat Germ

Description This gene encodes a member of the peptidase S1 family of serine proteases. Alternative splicing results in multiple transcript variants, at least one of which encodes a preproprotein that is proteolytically processed to generate a chymotrypsin-like protease. This protein is reported to be constitutively expressed in the NK (natural killer) cells of the immune system and may play a role in the cytotoxic arm of the innate immune response by inducing target cell death and by directly cleaving substrates in pathogen-infected cells. This gene is present in a gene cluster with another member of the granzyme subfamily on chromosome 14. [provided by RefSeq, Nov 2015]

Molecular Mass 53.7 kDa

AA Sequence
 MQPFLLLLAFLLTPGAGTEEIIGGHEAKPHSRPYMAFVQFLQEKSRRKRCGGILVRKDF
 VLTAHCQGSSINVTLGAHNIKEQERTQQFIPVKRPIHPAYNPKNFSNDIMLLQLER
 KAKWTTAVRPLRLPSSKAQVKPGQLCSVAGWGYVSMSTLATTLLQEVLLTVQKDCQ
 CERLFHGNYSRATEICVGDPPKKTQTGFKGDSSGGLVCKDVAQGILSYGNKKGTPPG
 VYIKVSHFLPWIKRTMKRL

 Tel: 1-631-559-9269 1-516-512-3133

 Email: info@creative-biomart.com  Fax: 1-631-938-8127

 45-1 Ramsey Road, Shirley, NY 11967, USA

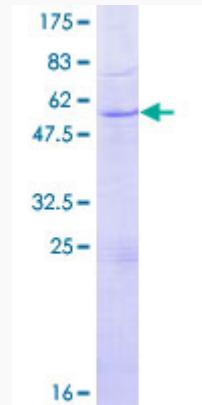
Applications	Enzyme-linked Immunoabsorbent Assay Western Blot (Recombinant protein) Antibody Production Protein Array
Notes	Best use within three months from the date of receipt of this protein.
Storage	Store at -8 centigrade. Aliquot to avoid repeated freezing and thawing.
Storage Buffer	50 mM Tris-HCl, 10 mM reduced Glutathione, pH=8.0 in the elution buffer.
GENE INFORMATION	
Gene Name	GZMH granzyme H (cathepsin G-like 2, protein h-CCPX) [Homo sapiens]
Official Symbol	GZMH
Synonyms	GZMH; granzyme H (cathepsin G-like 2, protein h-CCPX); CTSG2; granzyme H; CCP X; CGL 2; CSP C; CTLA1; cathepsin G-like 2; cytotoxic serine protease C; cytotoxin serine protease-C; cytotoxic T-lymphocyte proteinase; cytotoxic T-lymphocyte-associated serine esterase 1; CCP-X; CGL-2; CSP-C;
Gene ID	2999
mRNA Refseq	NM_033423
Protein Refseq	NP_219491
MIM	116831
UniProt ID	P20718

 Tel: 1-631-559-9269 1-516-512-3133

 Email: info@creative-biomart.com  Fax: 1-631-938-8127

 45-1 Ramsey Road, Shirley, NY 11967, USA

**Quality Control
Testing**



12.5% SDS-PAGE Stained with Coomassie Blue.

 Tel: 1-631-559-9269 1-516-512-3133

 Email: info@creative-biomart.com  Fax: 1-631-938-8127

 45-1 Ramsey Road, Shirley, NY 11967, USA