

Active Recombinant Human GZMM protein, His-tagged

Cat. No. GZMM-98H Lot. No. (See product label)

SPECIFICATION

Product Overview	Recombinant Human GZMM protein(Ile26~Ala257), fused with N-terminal His tag, was expressed in E. coli.
Species	Human
Source	E.coli
ProteinLength	Ile26~Ala257
Form	20mM Tris, 150mM NaCl, pH8.0, containing 0.05% sarcosyl and 5% trehalose
Bio-activity	<p>GZMM (Granzyme M) is one of the neutral serine proteases, which is specifically expressed by NK cells and mediates a novel major and perforin-dependent cell death pathway. Granzyme M has been proven to targets α-Tubulin and disorganizes the microtubule network, besides, Ezrin has also been identified as a substrate of GZMM. Therefore, a catalytic assay was conducted to detect the protease activity of recombinant human GZMM using Hela cells lysates. Briefly, protein lysates were extracted from 2×10^7 Hela cells using Lysis Buffer, then incubated with normal or inactivated GZMM in 37°C for 4h. Samples were immunoblotted using Abs β-actin as control, and Ezrin to detect the enzyme activity. The results were shown below. It is obvious that recombinant human GZMM cleaved Ezrin.</p>
Molecular Mass	26.3kDa
AA Sequence	MGHHHHHHSGSEF-IIGGR EVIPHSRPYM ASLQRNGSHL CGGVLVHPKW

 Tel: 1-631-559-9269 1-516-512-3133

 Email: info@creative-biomart.com  Fax: 1-631-938-8127

 45-1 Ramsey Road, Shirley, NY 11967, USA

VLTAAHCLAQ RMAQLRLVLG LHTLDSPGLT FHIKAAIQHP RYKPVPALEN
 DLALLQLDGK VKPSRTIRPL ALPSKRQVVA AGTRCSMAGW GLTHQGGRLS
 RVLRELDLQV LDTRMCNNSR FWNGSLSPSM VCLAADSKDQ APCKGDSGGP
 LVCGKGRVLA RVLSFSSRVC TDIFKPPVAT AVAPYVSWIR KVTGRSA

Purity >92%

Storage Avoid repeated freeze/thaw cycles. Store at 2-8°C for one month. Aliquot and store at -80°C for 12 months.

Reconstitution Reconstitute in 20mM Tris, 150mM NaCl (pH8.0) to a concentration of 0.1-1.0 mg/mL. Do not vorte.

GENE INFORMATION

Gene Name GZMM granzyme M (lymphocyte met-ase 1) [Homo sapiens]

Official Symbol GZMM

Synonyms GZMM; granzyme M (lymphocyte met-ase 1); granzyme M; LMET1; lymphocyte met ase 1; MET1; met-ase; HU-Met-1; lymphocyte met-ase 1; Met-1 serine protease; natural killer cell granular protease;

Gene ID 3004

mRNA Refseq NM_005317

Protein Refseq NP_005308

MIM 600311

 Tel: 1-631-559-9269 1-516-512-3133

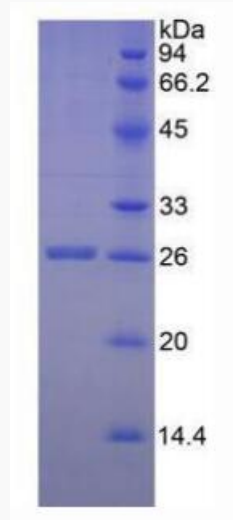
 Email: info@creative-biomart.com  Fax: 1-631-938-8127

 45-1 Ramsey Road, Shirley, NY 11967, USA

UniProt ID

P51124

SDS-PAGE



 Tel: 1-631-559-9269 1-516-512-3133

 Email: info@creative-biomart.com  Fax: 1-631-938-8127

 45-1 Ramsey Road, Shirley, NY 11967, USA