

## Recombinant Rat Gadd45g Protein, His-tagged

**Cat. No.** Gadd45g-1560R    **Lot. No.** (See product label)

### SPECIFICATION

|                         |   |
|-------------------------|---|
| <b>Product Overview</b> | Recombinant Rat Gadd45g Protein (Met1-Glu159) with N-His tag was expressed in E. coli.  |
| <b>Species</b>          | Rat   |
| <b>Source</b>           | E.coli  |
| <b>ProteinLength</b>    | Met1-Glu159   |
| <b>Description</b>      | Predicted to enable identical protein binding activity. Predicted to be involved in several processes, including positive regulation of apoptotic process; positive regulation of cold-induced thermogenesis; and positive regulation of stress-activated MAPK cascade. Predicted to act upstream of or within negative regulation of protein kinase activity and positive regulation of MAPK cascade. Predicted to be active in cytoplasm and nucleus. Biomarker of mesangial proliferative glomerulonephritis. Orthologous to human GADD45G (growth arrest and DNA damage inducible gamma). |
| <b>Form</b>             | Freeze-dried powder   |
| <b>Molecular Mass</b>   | Predicted Molecular Mass: 21.0 kDa<br>Accurate Molecular Mass: 24 kDa   |
| <b>Purity</b>           | > 97%   |

 Tel: 1-631-559-9269    1-516-512-3133

 Email: [info@creative-biomart.com](mailto:info@creative-biomart.com)     Fax: 1-631-938-8127

 45-1 Ramsey Road, Shirley, NY 11967, USA

|                       |  |
|-----------------------|--|
| <b>Applications</b>   | Positive Control; Immunogen; SDS-PAGE; WB.   |
| <b>Stability</b>      | The thermal stability is described by the loss rate. The loss rate was determined by accelerated thermal degradation test, that is, incubate the protein at 37 centigrade for 48h, and no obvious degradation and precipitation were observed. The loss rate is less than 5% within the expiration date under appropriate storage condition. |
| <b>Storage</b>        | Avoid repeated freeze/thaw cycles. Store at 2-8 centigrade for one month. Aliquot and store at -80 centigrade for 12 months.   |
| <b>Storage Buffer</b> | 20mM Tris, 150mM NaCl, pH8.0, containing 1mM EDTA, 1mM DTT, 0.01% SKL, 5% Trehalose and Proclin300.  |
| <b>Reconstitution</b> | Reconstitute in 20mM Tris, 150mM NaCl (pH8.0) to a concentration of 0.1-1.0 mg/mL. Do not vortex.  |

## GENE INFORMATION

|                        |   |
|------------------------|---|
| <b>Gene Name</b>       | <a href="#">Gadd45g growth arrest and DNA-damage-inducible, gamma [ Rattus norvegicus (Norway rat) ]</a>  |
| <b>Official Symbol</b> | <a href="#">Gadd45g</a>   |
| <b>Synonyms</b>        | GADD45G; growth arrest and DNA-damage-inducible, gamma; growth arrest and DNA damage-inducible protein GADD45 gamma; GADD45gamma; growth arrest and DNA damage inducible; growth arrest and DNA-damage-inducible 45 gamma; growth arrest and DNA-damage-inducible protein GADD45 gamma; |
| <b>Gene ID</b>         | <a href="#">291005</a>  |
| <b>mRNA Refseq</b>     | <a href="#">NM_001077640</a>  |

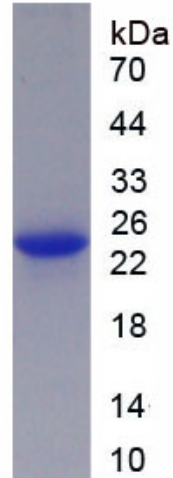
 Tel: 1-631-559-9269 1-516-512-3133

 Email: [info@creative-biomart.com](mailto:info@creative-biomart.com)  Fax: 1-631-938-8127

 45-1 Ramsey Road, Shirley, NY 11967, USA

Protein Refseq NP\_001071108

UniProt ID B5DEF0



 Tel: 1-631-559-9269 1-516-512-3133

 Email: [info@creative-biomart.com](mailto:info@creative-biomart.com)  Fax: 1-631-938-8127

 45-1 Ramsey Road, Shirley, NY 11967, USA