

Recombinant Mouse Gadd45g protein, His & T7-tagged

Cat. No. Gadd45g-1853M Lot. No. (See product label)

SPECIFICATION

Product Overview	Recombinant Mouse Gadd45g aa. (Met1~Glu159) fused with N-terminal His & T7 tag was produced in E. coli cells.
Species	Mouse
Source	E.coli
ProteinLength	Met1~Glu159
Form	Freeze-dried powder
Molecular Mass	24kDa as determined by SDS-PAGE reducing conditions.
Endotoxin	<1.0EU per 1ug (determined by the LAL method)
Purity	>95%
Applications	SDS-PAGE; WB; ELISA; IP.
Stability	The thermal stability is described by the loss rate. The loss rate was determined by accelerated thermal degradation test, that is, incubate the protein at 37°C for 48h, and no obvious degradation and precipitation were observed. The loss rate is less than 5% within the expiration date under appropriate storage condition.
Storage	Avoid repeated freeze/thaw cycles. Store at 2-8°C for one month. Aliquot and store at

 Tel: 1-631-559-9269 1-516-512-3133

 Email: info@creative-biomart.com  Fax: 1-631-938-8127

 45-1 Ramsey Road, Shirley, NY 11967, USA

-80°C for 12 months.

Storage buffer Supplied as lyophilized form in PBS, pH7.4, containing 5% trehalose, 0.01% sarcosyl.

Reconstitution Reconstitute in sterile PBS, pH7.2-pH7.4.

Isoelectric Point 4.2

GENE INFORMATION

Gene Name [Gadd45g growth arrest and DNA-damage-inducible 45 gamma \[Mus musculus \(house mouse\) \]](#)

Official Symbol [Gadd45g](#)

Synonyms Gadd45g; growth arrest and DNA-damage-inducible 45 gamma; CR6; DDIT2; OIG37; C86281; AI327420; growth arrest and DNA damage-inducible protein GADD45 gamma; cytokine-responsive protein CR6; growth arrest and DNA-damage-inducible, gamma

Gene ID [23882](#)

mRNA Refseq [NM_011817.2](#)

Protein Refseq [NP_035947.2](#)

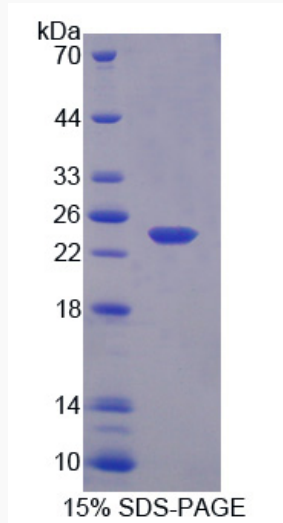
UniProt ID [Q9R0S0](#)

 Tel: 1-631-559-9269 1-516-512-3133

 Email: info@creative-biomart.com  Fax: 1-631-938-8127

 45-1 Ramsey Road, Shirley, NY 11967, USA

SDS-PAGE



 Tel: 1-631-559-9269 1-516-512-3133

 Email: info@creative-biomart.com  Fax: 1-631-938-8127

 45-1 Ramsey Road, Shirley, NY 11967, USA