

## Recombinant Mouse Gal protein, His & T7-tagged

**Cat. No.** Gal-1483M    **Lot. No.** (See product label)

### SPECIFICATION

<b>Product Overview</b>	Recombinant Mouse Gal aa. (Leu36~Lys123 (Accession # P47212)) fused with N-terminal His & T7 tag was produced in E. coli cells.
<b>Species</b>	Mouse
<b>Source</b>	E.coli
<b>ProteinLength</b>	Leu36~Lys123
<b>Description</b>	This gene encodes a neuroendocrine peptide that is principally produced by a subpopulation of lactotrophs in the pituitary gland. The encoded protein is a precursor that is proteolytically processed to generate two mature peptides: galanin and galanin message-associated peptide (GMAP). Mice lacking the encoded protein fail to lactate sufficiently due to abnormalities in the expression of prolactin and lactotroph proliferation, exhibit attenuated chronic neuropathic pain and developmental deficits in the dorsal root ganglion neurons. This gene encodes distinct isoforms, some or all of which may undergo similar processing to generate the mature proteins.
<b>Form</b>	Freeze-dried powder
<b>Molecular Mass</b>	Predicted Molecular Mass: 13.5kDa.
<b>Endotoxin</b>	<1.0EU per 1g (determined by the LAL method).
<b>Purity</b>	>95%

 Tel: 1-631-559-9269    1-516-512-3133

 Email: [info@creative-biomart.com](mailto:info@creative-biomart.com)     Fax: 1-631-938-8127

 45-1 Ramsey Road, Shirley, NY 11967, USA

<b>Characteristic</b>	The isoelectric point is 6.2.
<b>Applications</b>	SDS-PAGE; WB; ELISA; IP.
<b>Stability</b>	The thermal stability is described by the loss rate. The loss rate was determined by accelerated thermal degradation test, that is, incubate the protein at 37°C for 48h, and no obvious degradation and precipitation were observed. The loss rate is less than 5% within the expiration date under appropriate storage condition.
<b>Storage</b>	Avoid repeated freeze/thaw cycles. Store at 2-8°C for one month. Aliquot and store at -80°C for 12 months.
<b>Storage buffer</b>	Supplied as lyophilized form in PBS, pH7.4, containing 5% sucrose, 0.01% sarcosyl.
<b>Reconstitution</b>	Reconstitute in sterile PBS, pH7.2-pH7.4.

## GENE INFORMATION

<b>Gene Name</b>	Gal galanin [ <i>Mus musculus</i> (house mouse) ]
<b>Official Symbol</b>	Gal
<b>Synonyms</b>	Galn; galanin peptides
<b>Gene ID</b>	14419
<b>mRNA Refseq</b>	NM_001329667.1
<b>Protein Refseq</b>	NP_001316596.1
<b>UniProt ID</b>	P47212

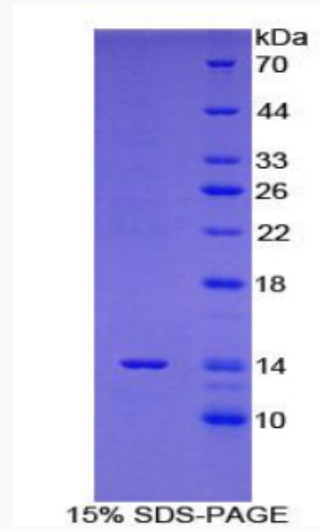
 Tel: 1-631-559-9269 1-516-512-3133

 Email: [info@creative-biomart.com](mailto:info@creative-biomart.com)  Fax: 1-631-938-8127

 45-1 Ramsey Road, Shirley, NY 11967, USA



SDS-PAGE



Tel: 1-631-559-9269 1-516-512-3133

Email: [info@creative-biomart.com](mailto:info@creative-biomart.com) Fax: 1-631-938-8127

45-1 Ramsey Road, Shirley, NY 11967, USA