

Recombinant Rat Galp protein, His & T7-tagged

Cat. No. Galp-8240R **Lot. No.** (See product label)

SPECIFICATION

| | |
|-------------------------|---|
| Product Overview | Recombinant Rat Galp aa. (Gly29~Leu115 (Accession # Q9QXQ6)) fused with N-terminal His & T7 tag was produced in E. coli cells. |
| Species | Rat |
| Source | E.coli |
| ProteinLength | Gly29~Leu115 |
| Form | Freeze-dried powder |
| Molecular Mass | Predicted Molecular Mass: 13.3kDa. |
| Endotoxin | <1.0EU per 1ug (determined by the LAL method) |
| Purity | >95% |
| Characteristic | The isoelectric point is 9.5. |
| Applications | SDS-PAGE; WB; ELISA; IP. |
| Stability | The thermal stability is described by the loss rate of the target protein. The loss rate was determined by accelerated thermal degradation test, that is, incubate the protein at 37°C for 48h, and no obvious degradation and precipitation were observed. (Referring from China Biological Products Standard, which was calculated by the |

 Tel: 1-631-559-9269 1-516-512-3133

 Email: info@creative-biomart.com  Fax: 1-631-938-8127

 45-1 Ramsey Road, Shirley, NY 11967, USA

Arrhenius equation.) The loss of this protein is less than 5% within the expiration date under appropriate storage condition.

Storage

Avoid repeated freeze/thaw cycles. Store at 2-8°C for one month. Aliquot and store at -80°C for 12 months.

Storage Buffer

Supplied as lyophilized form in 20mM Tris, 150mM NaCl, pH8.0, containing 1mM EDTA, 1mM DTT, 0.01% sarcosyl, 5% trehalose, and preservative.

Reconstitution

Reconstitute in sterile ddH₂O.

GENE INFORMATION

Gene Name

Galp galanin-like peptide [*Rattus norvegicus* (Norway rat)]

Official Symbol

Galp

Synonyms

Galp; galanin-like peptide

Gene ID

64568

mRNA Refseq

NM_022633.1

Protein Refseq

NP_072155.1

UniProt ID

Q9QXQ6

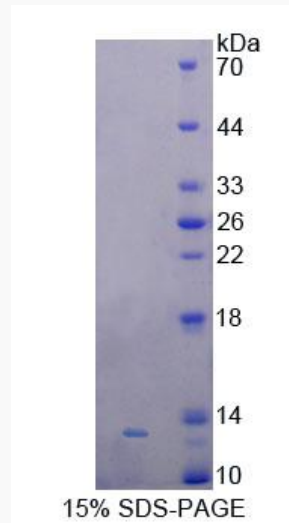
 Tel: 1-631-559-9269 1-516-512-3133

 Email: info@creative-biomart.com  Fax: 1-631-938-8127

 45-1 Ramsey Road, Shirley, NY 11967, USA



SDS-PAGE



Tel: 1-631-559-9269 1-516-512-3133

Email: info@creative-biomart.com Fax: 1-631-938-8127

45-1 Ramsey Road, Shirley, NY 11967, USA