

Recombinant Rat Galt protein, His & T7-tagged

Cat. No. Galt-1613R **Lot. No.** (See product label)

SPECIFICATION

Product Overview	Recombinant Rat Galt aa. (Met1~Ala379 (Accession # P43424)) fused with N-terminal His & T7 tag was produced in E. coli cells.
Species	Rat
Source	E.coli
ProteinLength	Met1~Ala379
Form	Freeze-dried powder
Molecular Mass	Predicted Molecular Mass: 47.0kDa
Endotoxin	<1.0EU per 1ug (determined by the LAL method)
Purity	>95%
Applications	SDS-PAGE; WB; ELISA; IP.
Stability	The thermal stability is described by the loss rate. The loss rate was determined by accelerated thermal degradation test, that is, incubate the protein at 37°C for 48h, and no obvious degradation and precipitation were observed. The loss rate is less than 5% within the expiration date under appropriate storage condition.
Storage	Avoid repeated freeze/thaw cycles. Store at 2-8°C for one month. Aliquot and store at

 Tel: 1-631-559-9269 1-516-512-3133

 Email: info@creative-biomart.com  Fax: 1-631-938-8127

 45-1 Ramsey Road, Shirley, NY 11967, USA

-80°C for 12 months.

Storage buffer Supplied as lyophilized form in PBS, pH7.4, containing 5% trehalose, 0.01% sarcosyl.

Reconstitution Reconstitute in sterile PBS, pH7.2-pH7.4.

Isoelectric Point 6.1

GENE INFORMATION

Gene Name Galt galactose-1-phosphate uridylyltransferase [*Rattus norvegicus* (Norway rat)]

Official Symbol [Galt](#)

Synonyms Galt; galactose-1-phosphate uridylyltransferase; galactose-1-phosphate uridylyltransferase; UDP-glucose--hexose-1-phosphate uridylyltransferase; gal-1-P uridylyltransferase; galactose-1-phosphate uridyl transferase

Gene ID [298003](#)

mRNA Refseq [NM_001013089.2](#)

Protein Refseq [NP_001013107.1](#)

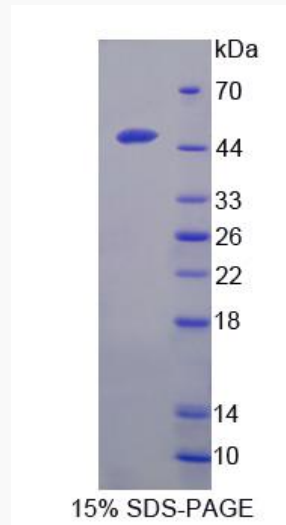
UniProt ID [P43424](#)

 Tel: 1-631-559-9269 1-516-512-3133

 Email: info@creative-biomart.com  Fax: 1-631-938-8127

 45-1 Ramsey Road, Shirley, NY 11967, USA

SDS-PAGE



 Tel: 1-631-559-9269 1-516-512-3133

 Email: info@creative-biomart.com  Fax: 1-631-938-8127

 45-1 Ramsey Road, Shirley, NY 11967, USA