

Recombinant Mouse Gc protein, His-tagged

Cat. No. Gc-1827M **Lot. No.** (See product label)

SPECIFICATION

Product Overview	Recombinant Mouse Gc aa. (Gln205~Gly403) fused with N-terminal His tag was produced in E. coli cells.
Species	Mouse
Source	E.coli
ProteinLength	Gln205~Gly403
Form	Freeze-dried powder
Molecular Mass	25kDa as determined by SDS-PAGE reducing conditions.
Endotoxin	<1.0EU per 1ug (determined by the LAL method)
Purity	>98%
Characteristic	The isoelectric point is 6.7.
Applications	SDS-PAGE; WB; ELISA; IP; CoIP; Purification; Amine Reactive Labeling.
Stability	The thermal stability is described by the loss rate of the target protein. The loss rate was determined by accelerated thermal degradation test, that is, incubate the protein at 37°C for 48h, and no obvious degradation and precipitation were observed. (Referring from China Biological Products Standard, which was calculated by the

 Tel: 1-631-559-9269 1-516-512-3133

 Email: info@creative-biomart.com  Fax: 1-631-938-8127

 45-1 Ramsey Road, Shirley, NY 11967, USA

Arrhenius equation.) The loss of this protein is less than 5% within the expiration date under appropriate storage condition.

Storage

Avoid repeated freeze/thaw cycles. Store at 2-8°C for one month. Aliquot and store at -80°C for 12 months.

Concentration

200µg/mL

Storage Buffer

PBS, pH7.4, containing 1mM DTT, 5% trehalose, 0.01% sarcosyl and Proclin300.

Reconstitution

Reconstitute in PBS (pH7.4) to a concentration of 0.1-1.0 mg/mL. Do not vortex.

GENE INFORMATION

Gene Name

Gc group specific component [*Mus musculus* (house mouse)]

Official Symbol

Gc

Synonyms

COL3A1; collagen type III alpha 1 chain; EDS4A; collagen alpha-1(III) chain; Ehlers-Danlos syndrome type IV, autosomal dominant; alpha-1 type III collagen; alpha1 (III) collagen; collagen, fetal; collagen, type III, alpha 1

Gene ID

14473

mRNA Refseq

NM_008096.2

Protein Refseq

NP_032122.1

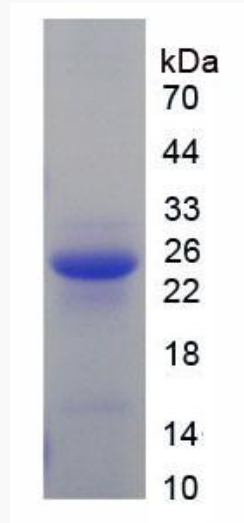
UniProt ID

P21614

 Tel: 1-631-559-9269 1-516-512-3133

 Email: info@creative-biomart.com  Fax: 1-631-938-8127

 45-1 Ramsey Road, Shirley, NY 11967, USA



SDS-PAGE

 Tel: 1-631-559-9269 1-516-512-3133

 Email: info@creative-biomart.com  Fax: 1-631-938-8127

 45-1 Ramsey Road, Shirley, NY 11967, USA