

Recombinant Rat Gc protein, His-tagged

Cat. No. Gc-1829R **Lot. No.** (See product label)

SPECIFICATION

Product Overview	Recombinant Rat Gc aa. (Gln395~Gln475 (Accession # P04276)) fused with N-terminal His tag was produced in E. coli cells.
Species	Rat
Source	E.coli
ProteinLength	Gln395~Gln475
Description	Transports vitamin D and vitamin D metabolites.
Form	Freeze-dried powder
Molecular Mass	Predicted Molecular Mass: 10.8kDa.
Endotoxin	<1.0EU per 1ug (determined by the LAL method)
Purity	>95%
Characteristic	The isoelectric point is 6.1.
Applications	SDS-PAGE; WB; ELISA; IP.
Stability	The thermal stability is described by the loss rate of the target protein. The loss rate was determined by accelerated thermal degradation test, that is, incubate the protein

 Tel: 1-631-559-9269 1-516-512-3133

 Email: info@creative-biomart.com  Fax: 1-631-938-8127

 45-1 Ramsey Road, Shirley, NY 11967, USA

at 37°C for 48h, and no obvious degradation and precipitation were observed. (Referring from China Biological Products Standard, which was calculated by the Arrhenius equation.) The loss of this protein is less than 5% within the expiration date under appropriate storage condition.

Storage

Avoid repeated freeze/thaw cycles. Store at 2-8°C for one month. Aliquot and store at -80°C for 12 months.

Storage Buffer

Supplied as lyophilized form in 10mM PBS, pH7.4, containing 1mM DTT, 5% trehalose, 0.01% sarcosyl and preservative.

Reconstitution

Reconstitute in sterile ddH₂O.

GENE INFORMATION

Gene Name

Gc GC, vitamin D binding protein [*Rattus norvegicus* (Norway rat)]

Official Symbol

Gc

Synonyms

Col3a1; collagen type III alpha 1 chain; collagen alpha-1(III) chain; collagen, type III, alpha 1; procollagen, type III, alpha 1

Gene ID

24384

mRNA Refseq

NM_012564.3

Protein Refseq

NP_036696.2

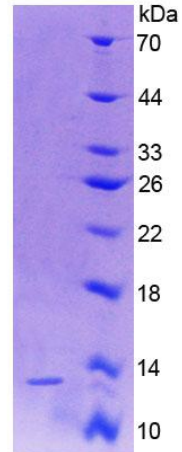
UniProt ID

P04276

 Tel: 1-631-559-9269 1-516-512-3133

 Email: info@creative-biomart.com  Fax: 1-631-938-8127

 45-1 Ramsey Road, Shirley, NY 11967, USA



15% SDS-PAGE

SDS-PAGE

Tel: 1-631-559-9269 1-516-512-3133

Email: info@creative-biomart.com Fax: 1-631-938-8127

45-1 Ramsey Road, Shirley, NY 11967, USA