

## Recombinant Mouse Gcg protein, His & T7-tagged

**Cat. No.** Gcg-6744M    **Lot. No.** (See product label)

### SPECIFICATION

<b>Product Overview</b>	Recombinant Mouse Gcg aa. (His21~Lys180 (Accession # P55095)) fused with N-terminal His & T7 tag was produced in E. coli cells.
<b>Species</b>	Mouse
<b>Source</b>	E.coli
<b>ProteinLength</b>	His21~Lys180
<b>Description</b>	This gene encodes glucagon, a pancreatic hormone that counteracts the action of insulin in the bloodstream. The encoded protein is processed to generate glucagon and two other glucagon-like peptides, GLP1 and GLP2. Glucagon stimulates gluconeogenesis, glycogenolysis and lipolysis. GLP1 induces secretion of insulin, suppresses glucagon secretion and inhibits feeding. GLP2 induces intestinal absorption of glucose by stimulating the growth of intestinal cells and preventing apoptosis.
<b>Form</b>	Freeze-dried powder
<b>Molecular Mass</b>	Predicted Molecular Mass: 22.3kDa.
<b>Endotoxin</b>	<1.0EU per 1ug (determined by the LAL method)
<b>Purity</b>	>95%

 Tel: 1-631-559-9269    1-516-512-3133

 Email: [info@creative-biomart.com](mailto:info@creative-biomart.com)     Fax: 1-631-938-8127

 45-1 Ramsey Road, Shirley, NY 11967, USA

<b>Characteristic</b>	The isoelectric point is 5.3.
<b>Applications</b>	SDS-PAGE; WB; ELISA; IP.
<b>Stability</b>	The thermal stability is described by the loss rate of the target protein. The loss rate was determined by accelerated thermal degradation test, that is, incubate the protein at 37°C for 48h, and no obvious degradation and precipitation were observed. (Referring from China Biological Products Standard, which was calculated by the Arrhenius equation.) The loss of this protein is less than 5% within the expiration date under appropriate storage condition.
<b>Storage</b>	Avoid repeated freeze/thaw cycles. Store at 2-8°C for one month. Aliquot and store at -80°C for 12 months.
<b>Storage buffer</b>	Supplied as lyophilized form in PBS, pH7.4, containing 5% trehalose, 0.01% sarcosyl.
<b>Reconstitution</b>	Reconstitute in sterile PBS, pH7.2-pH7.4.

## GENE INFORMATION

<b>Gene Name</b>	Gcg glucagon [ <i>Mus musculus</i> (house mouse) ]
<b>Official Symbol</b>	Gcg
<b>Synonyms</b>	Glu; PPG; GLP-1; glucagon-like peptide I; glucagon
<b>Gene ID</b>	14526
<b>mRNA Refseq</b>	NM_008100.4
<b>Protein Refseq</b>	NP_032126.1

 Tel: 1-631-559-9269 1-516-512-3133

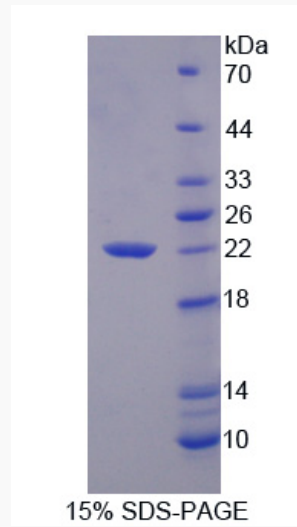
 Email: [info@creative-biomart.com](mailto:info@creative-biomart.com)  Fax: 1-631-938-8127

 45-1 Ramsey Road, Shirley, NY 11967, USA

UniProt ID

P55095

SDS-PAGE



 Tel: 1-631-559-9269 1-516-512-3133

 Email: [info@creative-biomart.com](mailto:info@creative-biomart.com)  Fax: 1-631-938-8127

 45-1 Ramsey Road, Shirley, NY 11967, USA