

## Recombinant Rat Gck protein, His & GST-tagged

Cat. No. Gck-749R Lot. No. (See product label)

### SPECIFICATION

<b>Product Overview</b>	Recombinant Rat Gck aa. (Asp194~Gly410 (Accession # P17712)) fused with N-terminal His & GST tag was produced in E. coli cells.
<b>Species</b>	Rat
<b>Source</b>	E.coli
<b>ProteinLength</b>	Asp194~Gly410
<b>Description</b>	Catalyzes the conversion of ATP and D-glucose to ADP and D-glucose 6-phosphate; may mediate glucosensing in glucose-inhibited and glucose-excited neurons.
<b>Form</b>	Freeze-dried powder
<b>Molecular Mass</b>	Predicted Molecular Mass: 54.1kDa
<b>Endotoxin</b>	<1.0EU per 1g (determined by the LAL method)
<b>Purity</b>	>90%
<b>Characteristic</b>	The isoelectric point is 4.5.
<b>Applications</b>	SDS-PAGE; WB; ELISA; IP.
<b>Stability</b>	The thermal stability is described by the loss rate. The loss rate was determined by

 Tel: 1-631-559-9269 1-516-512-3133

 Email: [info@creative-biomart.com](mailto:info@creative-biomart.com)  Fax: 1-631-938-8127

 45-1 Ramsey Road, Shirley, NY 11967, USA

accelerated thermal degradation test, that is, incubate the protein at 37°C for 48h, and no obvious degradation and precipitation were observed. The loss rate is less than 5% within the expiration date under appropriate storage condition.

**Storage**

Avoid repeated freeze/thaw cycles. Store at 2-8°C for one month. Aliquot and store at -80°C for 12 months.

**Storage buffer**

Supplied as lyophilized form in 20mM Tris, 150mM NaCl, pH8.0, containing 1mM EDTA, 1mM DTT, 0.01% sarcosyl, 5% trehalose, and preservative.

**Reconstitution**

Reconstitute in sterile ddH<sub>2</sub>O.

## GENE INFORMATION

**Gene Name**

Gck glucokinase [ *Rattus norvegicus* (Norway rat) ]

**Official Symbol**

Gck

**Synonyms**

GLK; GLUKA; RNGK2; HK IV; HK4; glucokinase variant 3; hexokinase type IV; hexokinase-4; hexokinase-D; glucokinase

**Gene ID**

24385

**mRNA Refseq**

NM\_001270849.1

**Protein Refseq**

NP\_001257778.1

**UniProt ID**

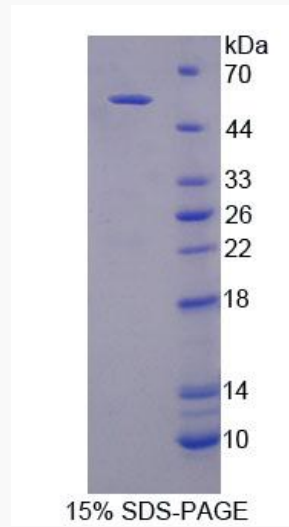
P17712

 Tel: 1-631-559-9269 1-516-512-3133

 Email: [info@creative-biomart.com](mailto:info@creative-biomart.com)  Fax: 1-631-938-8127

 45-1 Ramsey Road, Shirley, NY 11967, USA

**SDS-PAGE**



 Tel: 1-631-559-9269 1-516-512-3133

 Email: [info@creative-biomart.com](mailto:info@creative-biomart.com)  Fax: 1-631-938-8127

 45-1 Ramsey Road, Shirley, NY 11967, USA