

## Recombinant Rat Gdf1 Protein, His-tagged

**Cat. No.** Gdf1-270R    **Lot. No.** (See product label)

### SPECIFICATION

<b>Product Overview</b>	Recombinant Rat Gdf1(Leu183~Arg357) fused with His tag at N-terminal was expressed in E. coli.
<b>Species</b>	Rat
<b>Source</b>	E.coli
<b>ProteinLength</b>	Leu183~Arg357
<b>Description</b>	This gene encodes a member of the bone morphogenetic protein (BMP) family and the TGF-beta superfamily. This group of proteins is characterized by a polybasic proteolytic processing site that is cleaved to produce a mature protein containing seven conserved cysteine residues. The members of this family are regulators of cell growth and differentiation in both embryonic and adult tissues. The mouse ortholog of this gene is involved in the establishment of left-right asymmetry in early embryogenesis and in neural development in later embryogenesis. This protein is transcribed from a bicistronic mRNA that also encodes the LAG1 homolog, ceramide synthase 1 gene. Mono-cistronic transcripts for this gene are also found in mouse, but it is not known if they exist in rat.
<b>Form</b>	PBS, pH7.4, containing 0.01% SKL, 1mM DTT, 5% Trehalose and Proclin300.
<b>Molecular Mass</b>	20.1kDa
<b>Endotoxin</b>	<1.0EU per 1ug (determined by the LAL method)

 Tel: 1-631-559-9269    1-516-512-3133

 Email: [info@creative-biomart.com](mailto:info@creative-biomart.com)     Fax: 1-631-938-8127

 45-1 Ramsey Road, Shirley, NY 11967, USA

<b>Purity</b>	> 95%
<b>Applications</b>	Positive Control; Immunogen; SDS-PAGE; WB. If bio-activity of the protein is needed, please check active protein
<b>Stability</b>	The thermal stability is described by the loss rate. The loss rate was determined by accelerated thermal degradation test, that is, incubate the protein at 37 centigrade for 48h, and no obvious degradation and precipitation were observed. The loss rate is less than 5% within the expiration date under appropriate storage condition.
<b>Storage</b>	Avoid repeated freeze/thaw cycles. Store at 2-8 centigrade for one month. Aliquot and store at -80 centigrade for 12 months.
<b>Reconstitution</b>	Reconstitute in PBS or others

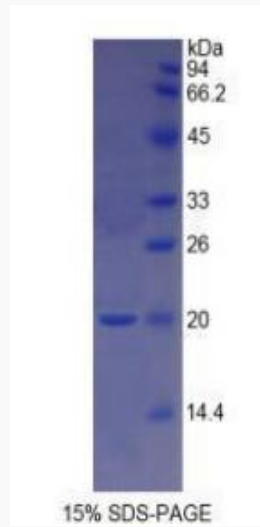
## GENE INFORMATION

<b>Gene Name</b>	<a href="#">Gdf1 growth differentiation factor 1 [ Rattus norvegicus ]</a>
<b>Official Symbol</b>	<a href="#">Gdf1</a>
<b>Synonyms</b>	GDF1; growth differentiation factor 1;
<b>Gene ID</b>	<a href="#">306351</a>
<b>mRNA Refseq</b>	<a href="#">NM_001044240</a>
<b>Protein Refseq</b>	<a href="#">NP_001037705</a>

 Tel: 1-631-559-9269 1-516-512-3133

 Email: [info@creative-biomart.com](mailto:info@creative-biomart.com)  Fax: 1-631-938-8127

 45-1 Ramsey Road, Shirley, NY 11967, USA



Tel: 1-631-559-9269 1-516-512-3133

Email: [info@creative-biomart.com](mailto:info@creative-biomart.com) Fax: 1-631-938-8127

45-1 Ramsey Road, Shirley, NY 11967, USA