

## Recombinant Mouse Gdf15 protein, hFc-tagged

Cat. No. Gdf15-01M Lot. No. (See product label)

### SPECIFICATION

<b>Product Overview</b>	Recombinant Mouse Gdf15 protein(Q9Z0J7)(Ser189-Ala303), fused with N-terminal hFc tag, was expressed in HEK293.
<b>Species</b>	Mouse
<b>Source</b>	HEK293
<b>ProteinLength</b>	Ser189-Ala303
<b>Tag</b>	N-hFc
<b>Form</b>	Lyophilized from 0.22µm filtered solution in PBS (pH 7.4). Normally 8% trehalose is added as protectant before lyophilization.
<b>Bio-activity</b>	Immobilized Mouse GFRAL, His Tag at 2ug/ml (100ul/well) on the plate. Dose response curve for Mouse GDF15, hFc Tag with the EC50 of 3.0ng/ml determined by ELISA.
<b>Molecular Mass</b>	The protein has a predicted MW of 37.9 kDa. Due to glycosylation, the protein migrates to 40-50 kDa based on Tris-Bis PAGE result.
<b>Endotoxin</b>	Less than 1EU per µg by the LAL method.
<b>Purity</b>	> 95% as determined by Tris-Bis PAGE;> 95% as determined by HPLC

 Tel: 1-631-559-9269 1-516-512-3133

 Email: [info@creative-biomart.com](mailto:info@creative-biomart.com)  Fax: 1-631-938-8127

 45-1 Ramsey Road, Shirley, NY 11967, USA

**Storage** Reconstituted protein stable at -80°C for 12 months, 4°C for 1 week. Use a manual defrost freezer and avoid repeated freeze-thaw cycles.

**Reconstitution** Centrifuge tubes before opening. Reconstituting to a concentration more than 100 µg/ml is recommended. Dissolve the lyophilized protein in distilled water.

## GENE INFORMATION

**Gene Name** Gdf15 growth differentiation factor 15 [ Mus musculus ]

**Official Symbol** Gdf15

**Synonyms** GDF15; growth differentiation factor 15; growth/differentiation factor 15; GDF-15; macrophage inhibiting cytokine-1; SBF; MIC-1; NAG-1;

**Gene ID** 23886

**mRNA Refseq** NM\_011819

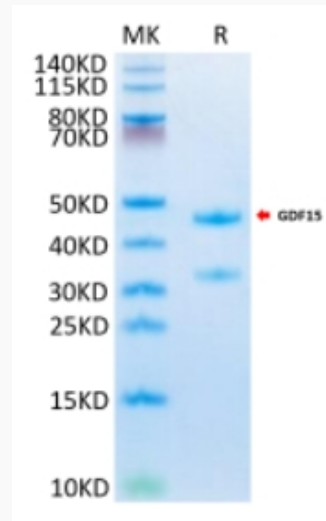
**Protein Refseq** NP\_035949

 Tel: 1-631-559-9269 1-516-512-3133

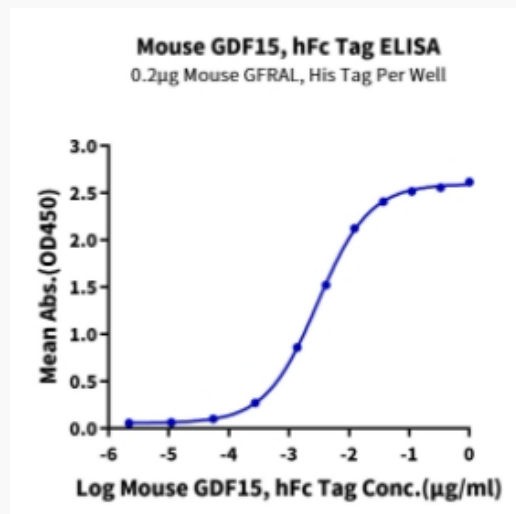
 Email: [info@creative-biomart.com](mailto:info@creative-biomart.com)  Fax: 1-631-938-8127

 45-1 Ramsey Road, Shirley, NY 11967, USA

**Tris-Bis PAGE**



**ELISA Data**



 Tel: 1-631-559-9269 1-516-512-3133

 Email: [info@creative-biomart.com](mailto:info@creative-biomart.com)  Fax: 1-631-938-8127

 45-1 Ramsey Road, Shirley, NY 11967, USA