

Recombinant Mouse Gdf15 Protein, Ser189-Ala303, N-hFc tagged, Biotinylated

Cat. No. Gdf15-263M Lot. No. (See product label)

SPECIFICATION

Product Overview	Recombinant mouse GDF15-N-hFc protein was developed from HEK293 and has a target region of N-hFc.
Species	Mouse
Source	HEK293
ProteinLength	Ser189-Ala303
Description	<p>This gene encodes a secreted ligand of the TGF-beta (transforming growth factor-beta) superfamily of proteins. Ligands of this family bind various TGF-beta receptors leading to recruitment and activation of SMAD family transcription factors that regulate gene expression. The encoded preproprotein is proteolytically processed to generate each subunit of the disulfide-linked homodimer. The protein is expressed in a broad range of cell types, acts as a pleiotropic cytokine and is involved in the stress response program of cells after cellular injury. Increased protein levels are associated with disease states such as tissue hypoxia, inflammation, acute injury and oxidative stress. Mice lacking a functional copy of this gene exhibit progressive loss of motor neurons, and more rapid blood clot formation.</p>
Conjugation/Label	Biotin
Form	Lyophilised

 Tel: 1-631-559-9269 1-516-512-3133

 Email: info@creative-biomart.com  Fax: 1-631-938-8127

 45-1 Ramsey Road, Shirley, NY 11967, USA

Endotoxin	Endotoxin level was found to be less than 0.1 ng/μg (1 EU/μg).
Notes	FOR RESEARCH USE ONLY (RUO).
Storage	The lyophilized protein is stable for at least 1 year from date of receipt at -20 centigrade.
Storage Buffer	Lyophilised from 0.2 μm filtered PBS solution pH 7.4. Upon receipt centrifuge vial to ensure maximal product extraction, recommended: 20 sec, 5K RPM
Conjugation	Biotin

GENE INFORMATION

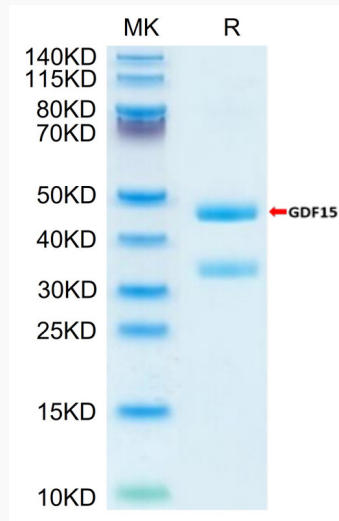
Gene Name	Gdf15 growth differentiation factor 15 [Mus musculus]
Official Symbol	Gdf15
Synonyms	GDF15; growth differentiation factor 15; growth/differentiation factor 15; GDF-15; macrophage inhibiting cytokine-1; SBF; MIC-1; NAG-1;
Gene ID	23886
mRNA Refseq	NM_011819
Protein Refseq	NP_035949
UniProt ID	Q6NX63

 Tel: 1-631-559-9269 1-516-512-3133

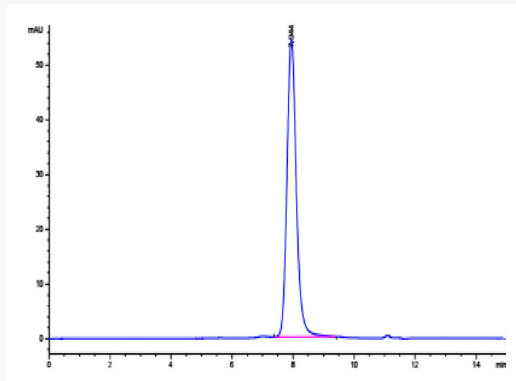
 Email: info@creative-biomart.com  Fax: 1-631-938-8127

 45-1 Ramsey Road, Shirley, NY 11967, USA

**Biotinylated Mouses
GDF15 on Tris-Bis
PAGE under reduced
condition. The purity
is greater than 95%.**



**The purity of
Biotinylated Mouses
GDF15 is greater
than 95% as
determined by SEC-
HPLC.**



**Immobilized Mouse
GFRAL, His Tag at 2
µg/mL (100 µL/Well)
on the plate. Dose
response curve for
Biotinylated Mouse
GDF15, hFc Tag with**

 Tel: 1-631-559-9269 1-516-512-3133

 Email: info@creative-biomart.com  Fax: 1-631-938-8127

 45-1 Ramsey Road, Shirley, NY 11967, USA



the EC50 of 10 ng/mL
determined by
ELISA.

 Tel: 1-631-559-9269 1-516-512-3133

 Email: info@creative-biomart.com  Fax: 1-631-938-8127

 45-1 Ramsey Road, Shirley, NY 11967, USA