

Recombinant Mouse Gdf15 protein, His-tagged

Cat. No. Gdf15-26M Lot. No. (See product label)

SPECIFICATION

Product Overview	Recombinant Mouse Gdf15 (His193~Val296) was expressed in E. coli with N-terminal his tag.
Species	Mouse
Source	E.coli
ProteinLength	193-296 a.a.
Form	Lyophilized from 20mM Tris, 150mM NaCl,pH8.0, containing 1mM EDTA, 1mM DTT, 0.01% SKL, 5% Trehalose and Proclin300.
Molecular Mass	The protein has a calculated MW of 18.2kDa. The protein migrates as 20kDa on a SDS-PAGE gel under reducing (R) condition due to glycosylation.
Endotoxin	< 1.0EU per 1g (determined by the LAL method)
Purity	> 95%
Stability	The thermal stability is described by the loss rate. The loss rate was determined by accelerated thermal degradation test, that is, incubate the protein at 37 centigrade for 48h, and no obvious degradation and precipitation were observed. The loss rate is less than 5% within the expiration date under appropriate storage condition.
Storage	Store at 2-8 centigrade for one month. Aliquot and store at -80 centigrade for 12

 Tel: 1-631-559-9269 1-516-512-3133

 Email: info@creative-biomart.com  Fax: 1-631-938-8127

 45-1 Ramsey Road, Shirley, NY 11967, USA

months.

Reconstitution

Reconstitute in 20mM Tris, 150mM NaCl (pH8.0) to a concentration of 0.1-1.0 mg/mL.
Do not vortex.

GENE INFORMATION**Gene Name**

Gdf15 growth differentiation factor 15 [Mus musculus]

Official Symbol

Gdf15

Synonyms

GDF15; growth differentiation factor 15; growth/differentiation factor 15; GDF-15;
macrophage inhibiting cytokine-1; SBF; MIC-1; NAG-1

Gene ID

23886

mRNA Refseq

NM_011819

Protein Refseq

NP_035949

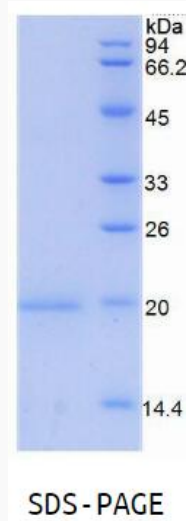
UniProt ID

Q9Z0J7

 Tel: 1-631-559-9269 1-516-512-3133

 Email: info@creative-biomart.com  Fax: 1-631-938-8127

 45-1 Ramsey Road, Shirley, NY 11967, USA



Tel: 1-631-559-9269 1-516-512-3133

Email: info@creative-biomart.com Fax: 1-631-938-8127

45-1 Ramsey Road, Shirley, NY 11967, USA