

Recombinant Rat GDF15 protein, His-tagged

Cat. No. Gdf15-26R **Lot. No.** (See product label)

SPECIFICATION

Product Overview	Recombinant Rat GDF15 protein(Q9Z0J6)(Ser189-Ala303), fused with N-terminal His tag, was expressed in E.coli.
Species	Rat
Source	N-His
ProteinLength	Ser189-Ala303
Tag	N-His
Form	Lyophilized from 0.22µm filtered solution in 50mM HAc (pH 2.9). Normally 8% trehalose is added as protectant before lyophilization.
Bio-activity	Immobilized Rat GDF-15, His Tag at 2µg/ml (100µl/well) on the plate. Dose response curve for Human GFRAL, hFc Tag with the EC50 of 17.2ng/ml determined by ELISA.
Molecular Mass	The protein has a predicted MW of 13.68 kDa. The protein migrates to 15-17 kDa based on Tris-Bis PAGE result.
Endotoxin	Less than 1EU per µg by the LAL method.
Purity	> 95% as determined by Tris-Bis PAGE.
Storage	Reconstituted protein stable at -80°C for 12 months, 4°C for 1 week. Use a manual

 Tel: 1-631-559-9269 1-516-512-3133

 Email: info@creative-biomart.com  Fax: 1-631-938-8127

 45-1 Ramsey Road, Shirley, NY 11967, USA

defrost freezer and avoid repeated freeze-thaw cycles.

Reconstitution

Centrifuge tubes before opening. Reconstituting to a concentration more than 100 µg/ml is recommended. Dissolve the lyophilized protein in 50mM HAc (pH 2.9).

GENE INFORMATION

Gene Name [Gdf15 growth differentiation factor 15 \[Rattus norvegicus \]](#)

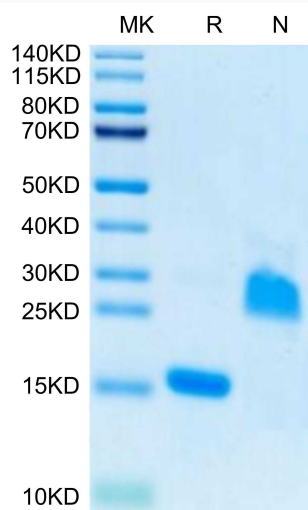
Official Symbol [GDF15](#)

Synonyms GDF15; growth differentiation factor 15; growth/differentiation factor 15; GDF-15;

Gene ID [29455](#)

mRNA Refseq [NM_019216](#)

Protein Refseq [NP_062089](#)

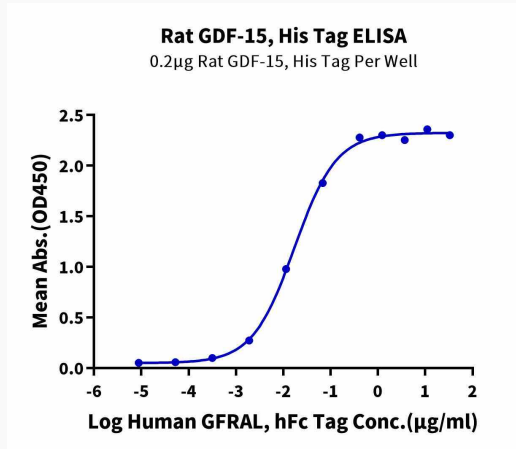
Tris-Bis PAGE


 Tel: 1-631-559-9269 1-516-512-3133

 Email: info@creative-biomart.com  Fax: 1-631-938-8127

 45-1 Ramsey Road, Shirley, NY 11967, USA

ELISA



 Tel: 1-631-559-9269 1-516-512-3133

 Email: info@creative-biomart.com  Fax: 1-631-938-8127

 45-1 Ramsey Road, Shirley, NY 11967, USA