

## Recombinant Mouse Gdf15 Protein (Trp31-Ala303), C-His tagged

Cat. No. Gdf15-5783M Lot. No. (See product label)

### SPECIFICATION

<b>Product Overview</b>	Recombinant mouse GDF15 (Trp31-Ala303) fused with the C-terminal His tag was expressed in mammalian cells.
<b>Species</b>	Mouse
<b>Source</b>	Mammalian Cells
<b>ProteinLength</b>	Trp31-Ala303
<b>Form</b>	Lyophilized powder/frozen liquid
<b>Molecular Mass</b>	30.03 kDa
<b>Purity</b>	> 90 % as determined by SDS-PAGE
<b>Notes</b>	For research use only.
<b>Storage</b>	Use a manual defrost freezer and avoid repeated freeze thaw cycles. Store at 2 to 8 centigrade for one week. Store at -20 to -80 centigrade for twelve months from the date of receipt.
<b>Storage Buffer</b>	Supplied as solution form in PBS or lyophilized from PBS.
<b>Reconstitution</b>	Reconstitute in sterile water for a stock solution.

 Tel: 1-631-559-9269 1-516-512-3133

 Email: [info@creative-biomart.com](mailto:info@creative-biomart.com)  Fax: 1-631-938-8127

 45-1 Ramsey Road, Shirley, NY 11967, USA

**Shipping** They are shipped out with dry ice/blue ice unless customers require otherwise.

## GENE INFORMATION

**Gene Name** Gdf15 growth differentiation factor 15 [ Mus musculus (house mouse) ]

**Official Symbol** Gdf15

**Synonyms** GDF15; growth differentiation factor 15; growth/differentiation factor 15; GDF-15; macrophage inhibiting cytokine-1; SBF; MIC-1; NAG-1;

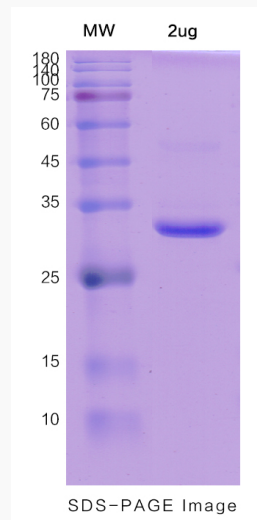
**Gene ID** 23886

**mRNA Refseq** NM\_011819

**Protein Refseq** NP\_035949

**UniProt ID** Q9Z0J7

## SDS-PAGE



 Tel: 1-631-559-9269 1-516-512-3133

 Email: [info@creative-biomart.com](mailto:info@creative-biomart.com)  Fax: 1-631-938-8127

 45-1 Ramsey Road, Shirley, NY 11967, USA