

Recombinant Mouse Gdf15 protein, His-SUMO-tagged

Cat. No. Gdf15-7573M Lot. No. (See product label)

SPECIFICATION

Product Overview	Recombinant Mouse Gdf15 protein(Q9Z0J7)(189-303aa), fused with N-terminal His-SUMO tag, was expressed in E.coli.
Species	Mouse
Source	E.coli
ProteinLength	189-303aa
Form	If the delivery form is liquid, the default storage buffer is Tris/PBS-based buffer, 5%-50% glycerol. If the delivery form is lyophilized powder, the buffer before lyophilization is Tris/PBS-based buffer, 6% Trehalose, pH 8.0.
Molecular Mass	25.5 kDa
Purity	Greater than 85% as determined by SDS-PAGE.
Storage	Store at -20°C/-80°C upon receipt, aliquoting is necessary for mutiple use. Avoid repeated freeze-thaw cycles.
Reconstitution	We recommend that this vial be briefly centrifuged prior to opening to bring the contents to the bottom. Please reconstitute protein in deionized sterile water to a concentration of 0.1-1.0 mg/mL. We recommend to add 5-50% of glycerol (final concentration) and aliquot for long-term storage at -20°C/-80°C.

 Tel: 1-631-559-9269 1-516-512-3133

 Email: info@creative-biomart.com  Fax: 1-631-938-8127

 45-1 Ramsey Road, Shirley, NY 11967, USA

AA Sequence SAHAHPRDSCPLGPGRCCHLETVQATLEDLGWSDWVLSRQLQLSMCVGECPLY
RSANTHAQIKARLHGLQPDKVPAPCCVPSSYTPVVLHRTDSGVSLQTYDDLVARGL
CHCA

GENE INFORMATION

Gene Name Gdf15 growth differentiation factor 15 [*Mus musculus*]

Official Symbol Gdf15

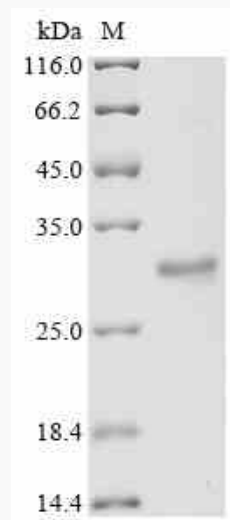
Synonyms GDF15; growth differentiation factor 15; growth/differentiation factor 15; GDF-15; macrophage inhibiting cytokine-1; SBF; MIC-1; NAG-1;

Gene ID 23886

mRNA Refseq NM_011819

Protein Refseq NP_035949

SDS-PAGE



Tel: 1-631-559-9269 1-516-512-3133

Email: info@creative-biomart.com Fax: 1-631-938-8127

45-1 Ramsey Road, Shirley, NY 11967, USA