

## Recombinant Rat Gdf2 Protein, His-tagged

Cat. No. Gdf2-373R Lot. No. (See product label)

### SPECIFICATION

<b>Product Overview</b>	Recombinant Rat Gdf2 Protein (Ser320-Arg430) with N-His tag was expressed in E. coli.
<b>Species</b>	Rat
<b>Source</b>	E.coli
<b>ProteinLength</b>	Ser320-Arg430
<b>Description</b>	Predicted to enable cytokine activity. Predicted to be involved in several processes, including positive regulation of transmembrane receptor protein serine/threonine kinase signaling pathway; regulation of endothelial cell proliferation; and transmembrane receptor protein serine/threonine kinase signaling pathway. Predicted to act upstream of or within osteoblast differentiation; positive regulation of gene expression; and positive regulation of transcription by RNA polymerase II. Predicted to be active in extracellular space. Human ortholog(s) of this gene implicated in hereditary hemorrhagic telangiectasia. Orthologous to human GDF2 (growth differentiation factor 2).
<b>Form</b>	Freeze-dried powder
<b>Molecular Mass</b>	Predicted Molecular Mass: 15.9 kDa Accurate Molecular Mass: 16 kDa
<b>Purity</b>	> 95%

 Tel: 1-631-559-9269 1-516-512-3133

 Email: [info@creative-biomart.com](mailto:info@creative-biomart.com)  Fax: 1-631-938-8127

 45-1 Ramsey Road, Shirley, NY 11967, USA

<b>Applications</b>	Positive Control; Immunogen; SDS-PAGE; WB.
<b>Stability</b>	The thermal stability is described by the loss rate. The loss rate was determined by accelerated thermal degradation test, that is, incubate the protein at 37 centigrade for 48h, and no obvious degradation and precipitation were observed. The loss rate is less than 5% within the expiration date under appropriate storage condition.
<b>Storage</b>	Avoid repeated freeze/thaw cycles. Store at 2-8 centigrade for one month. Aliquot and store at -80 centigrade for 12 months.
<b>Storage Buffer</b>	20mM Tris, 150mM NaCl, pH8.0, containing 1mM EDTA, 1mM DTT, 0.01% SKL, 5% Trehalose and Proclin300.
<b>Reconstitution</b>	Reconstitute in sterile water to a concentration of 0.1-1.0 mg/mL. Do not vortex.

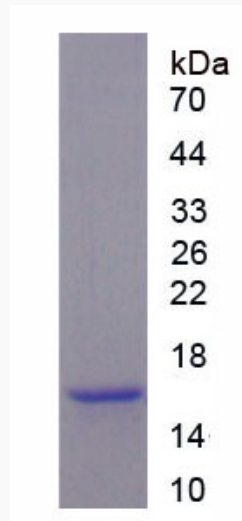
## GENE INFORMATION

<b>Gene Name</b>	Gdf2 growth differentiation factor 2 [ <i>Rattus norvegicus</i> (Norway rat) ]
<b>Official Symbol</b>	Gdf2
<b>Synonyms</b>	GDF2; growth differentiation factor 2
<b>Gene ID</b>	290921
<b>mRNA Refseq</b>	NM_001106096
<b>Protein Refseq</b>	NP_001099566
<b>UniProt ID</b>	M0RB87

 Tel: 1-631-559-9269 1-516-512-3133

 Email: [info@creative-biomart.com](mailto:info@creative-biomart.com)  Fax: 1-631-938-8127

 45-1 Ramsey Road, Shirley, NY 11967, USA



Tel: 1-631-559-9269 1-516-512-3133

Email: [info@creative-biomart.com](mailto:info@creative-biomart.com) Fax: 1-631-938-8127

45-1 Ramsey Road, Shirley, NY 11967, USA