

## Recombinant Mouse Gdf5 Protein, His-tagged

Cat. No. Gdf5-7211M Lot. No. (See product label)

### SPECIFICATION

<b>Product Overview</b>	Recombinant mouse GDF5 protein, fused to His-tag at N-terminus, was expressed in E. coli.
<b>Species</b>	Mouse
<b>Source</b>	E.coli
<b>ProteinLength</b>	376-495
<b>Description</b>	This gene encodes a secreted ligand of the TGF-beta (transforming growth factor-beta) superfamily of proteins. Ligands of this family bind various TGF-beta receptors leading to recruitment and activation of SMAD family transcription factors that regulate gene expression. The encoded preproprotein is proteolytically processed to generate each subunit of the disulfide-linked homodimer. This protein regulates the development of numerous tissue and cell types, including cartilage, joints, brown fat, teeth, and the growth of neuronal axons and dendrites. Mice with a mutation in this gene exhibit enhanced tooth enamel formation.
<b>Form</b>	Liquid
<b>Molecular Mass</b>	16 kDa
<b>AA Sequence</b>	MGSSHHHHHSSGLVPRGSHMGSAPLANRQGKRPSKNLKARCSRKALHVNFKDM GWDDWIIAPLEYEAFHCEGLCEFPLRSHLEPTNHAVIQTLMNSMDPESTPPTCCVPT RLSPISILFIDSANNVYKQYEDMVVESCGR

 Tel: 1-631-559-9269 1-516-512-3133

 Email: [info@creative-biomart.com](mailto:info@creative-biomart.com)  Fax: 1-631-938-8127

 45-1 Ramsey Road, Shirley, NY 11967, USA

<b>Purity</b>	> 90 % by SDS-PAGE
<b>Stability</b>	Shelf life: one year from despatch.
<b>Storage</b>	Store undiluted at 2-8 centigrade for one week or (in aliquots) at -20 to -80 centigrade for longer. Avoid repeated freezing and thawing.
<b>Concentration</b>	0.5 mg/mL (determined by Bradford assay)
<b>Storage Buffer</b>	20 mM Tris-HCl buffer (pH 8.0) containing 10 % glycerol.

## GENE INFORMATION

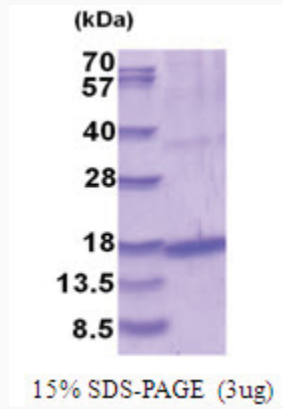
<b>Gene Name</b>	Gdf5 growth differentiation factor 5 [ <i>Mus musculus</i> (house mouse) ]
<b>Official Symbol</b>	Gdf5
<b>Synonyms</b>	Gdf5; growth differentiation factor 5; b; bp; brp; CDMP-; BMP-14; Cdmp-1; growth/differentiation factor 5; bone morphogenetic protein 14; cartilage-derived morphogenetic protein-1
<b>Gene ID</b>	14563
<b>mRNA Refseq</b>	NM_008109
<b>Protein Refseq</b>	NP_032135
<b>UniProt ID</b>	P43027

 Tel: 1-631-559-9269 1-516-512-3133

 Email: [info@creative-biomart.com](mailto:info@creative-biomart.com)  Fax: 1-631-938-8127

 45-1 Ramsey Road, Shirley, NY 11967, USA

**SDS-PAGE**



 Tel: 1-631-559-9269 1-516-512-3133

 Email: [info@creative-biomart.com](mailto:info@creative-biomart.com)  Fax: 1-631-938-8127

 45-1 Ramsey Road, Shirley, NY 11967, USA