

Recombinant Mouse Gdf7 protein

Cat. No. Gdf7-675M Lot. No. (See product label)

SPECIFICATION

Product Overview	Recombinant Mouse Gdf7 protein was expressed in Escherichia coli.
Species	Mouse
Source	E.coli
ProteinLength	146
Description	Growth/differentiation factors (GDF-1 to GDF-15) are members of the BMP family of TGF-beta superfamily proteins. They are produced as inactive preproteins which are then cleaved and assembled into active secreted homodimers. GDF dimers are disulfide-linked with the exception of GDF-3 and -9. GDF proteins are important during embryonic development, particularly in the skeletal, nervous, and muscular systems.
Form	Lyophilized from a 0.2µm filtered concentrated solution in 30 % Acetonitrile and 0.1 % TFA.
Bio-activity	Fully biologically active when compared to standard. The ED50 as determined by inducing alkaline phosphatase production of murine ATDC5 cells is less than 0.5 µg/ml, corresponding to a specific activity of > 2000 IU/mg.
Molecular Mass	Approximately 29.8 kDa, a homodimeric protein consisting of two 146 amino acid non-glycosylated polypeptide chains.

 Tel: 1-631-559-9269 1-516-512-3133

 Email: info@creative-biomart.com  Fax: 1-631-938-8127

 45-1 Ramsey Road, Shirley, NY 11967, USA

AA Sequence	TALAGTRGAQGS GGGGGGGGGGGGGGGGGGGGGGGGGGGGGAGRGHGRRGRSRCSRKSLHV DFKELGWDDWIIAPLDYEAYHCEGVCDFPLRSHLEPTNHAIQTLLNSMAPDAAPAS CCVPARLSPISILYIDAANNVYKQYEDMVVEACGCR
Endotoxin	Less than 0.1 EU/g of rMuGDF-7/BMP-12 as determined by LAL method.
Purity	>95% by SDS-PAGE and HPLC analysis.
Storage	Use a manual defrost freezer and avoid repeated freeze-thaw cycles. 12 months from date of receipt, -20 to -70 centigrade as supplied. 1 month, 2 to 8 centigrade under sterile conditions after reconstitution. 3 months, -20 to -70 centigrade under sterile conditions after reconstitution.
Reconstitution	We recommend that this vial be briefly centrifuged prior to opening to bring the contents to the bottom. Reconstitute in sterile distilled water or aqueous buffer containing 0.1 % BSA to a concentration of 0.1-1.0 mg/mL. Stock solutions should be apportioned into working aliquots and stored at ≤-20 centigrade. Further dilutions should be made in appropriate buffered solutions.

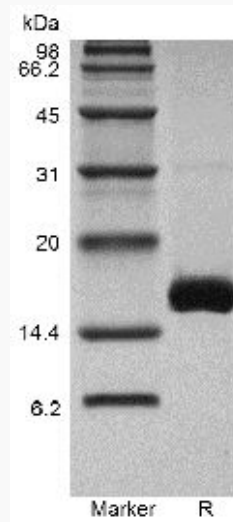
GENE INFORMATION

Gene Name	Gdf7
Official Symbol	Gdf7
Synonyms	GDF7; growth differentiation factor 7; growth/differentiation factor 7; GDF-7; BMP12;
Gene ID	238057
mRNA Refseq	NM_013527

Protein Refseq NP_038555

UniProt ID P43029

**SDS-PAGE of Gdf7-
675M**



 Tel: 1-631-559-9269 1-516-512-3133

 Email: info@creative-biomart.com  Fax: 1-631-938-8127

 45-1 Ramsey Road, Shirley, NY 11967, USA