

Recombinant Rat Gdnf protein, His-tagged

Cat. No. Gdnf-780R **Lot. No.** (See product label)

SPECIFICATION

Product Overview	Recombinant Rat Gdnf aa. (Ser78~Ile211 (Accession # Q07731)) fused with N-terminal His tag was produced in E. coli cells.
Species	Rat
Source	E.coli
ProteinLength	Ser78~Ile211
Description	Neurotrophic factor specific for midbrain dopamine neurons; binds to GDNFR-alpha and mediates activation of the Ret protein tyrosine kinase receptor.
Form	Freeze-dried powder
Molecular Mass	Predicted Molecular Mass: 16.2kDa
Endotoxin	<1.0EU per 1g (determined by the LAL method)
Purity	> 95%
Characteristic	The isoelectric point is 9.4.
Applications	SDS-PAGE; WB; ELISA; IP
Stability	The thermal stability is described by the loss rate. The loss rate was determined by

 Tel: 1-631-559-9269 1-516-512-3133

 Email: info@creative-biomart.com  Fax: 1-631-938-8127

 45-1 Ramsey Road, Shirley, NY 11967, USA

accelerated thermal degradation test, that is, incubate the protein at 37°C for 48h, and no obvious degradation and precipitation were observed. The loss rate is less than 5% within the expiration date under appropriate storage condition.

Storage

Avoid repeated freeze/thaw cycles. Store at 2-8°C for one month. Aliquot and store at -80°C for 12 months.

Storage buffer

Supplied as lyophilized form in 20mM Tris, 150mM NaCl, pH8.0, containing 1mM EDTA, 1mM DTT, 0.01% sarcosyl, 5% trehalose, and preservative.

Reconstitution

Reconstitute in ddH₂O.

GENE INFORMATION

Gene Name

Gdnf glial cell derived neurotrophic factor [*Rattus norvegicus* (Norway rat)]

Official Symbol

Gdnf

Synonyms

Gdnf; glial cell derived neurotrophic factor; gdnf; glial cell line-derived neurotrophic factor; ATF; Glial cell line derived neurotrophic factor; astrocyte-derived trophic factor

Gene ID

25453

mRNA Refseq

NM_019139.1

Protein Refseq

NP_062012.1

UniProt ID

Q07731

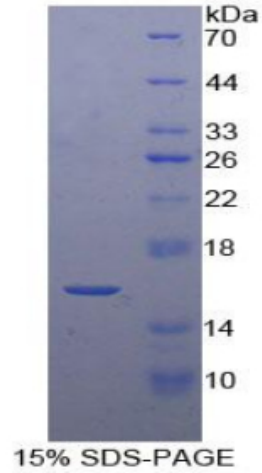
 Tel: 1-631-559-9269 1-516-512-3133

 Email: info@creative-biomart.com  Fax: 1-631-938-8127

 45-1 Ramsey Road, Shirley, NY 11967, USA



SDS-PAGE



Tel: 1-631-559-9269 1-516-512-3133

Email: info@creative-biomart.com Fax: 1-631-938-8127

45-1 Ramsey Road, Shirley, NY 11967, USA