

## Recombinant Mouse Gfer protein, His & T7-tagged

**Cat. No.** Gfer-1609M    **Lot. No.** (See product label)

### SPECIFICATION

<b>Product Overview</b>	Recombinant Mouse Gfer aa. (Gly13~Asp198 (Accession # P56213)) fused with N-terminal His & T7 tag was produced in E. coli cells.
<b>Species</b>	Mouse
<b>Source</b>	E.coli
<b>ProteinLength</b>	Gly13~Asp198
<b>Form</b>	Freeze-dried powder
<b>Molecular Mass</b>	Predicted Molecular Mass: 25.4kDa
<b>Endotoxin</b>	<1.0EU per 1ug (determined by the LAL method)
<b>Purity</b>	>95%
<b>Applications</b>	SDS-PAGE; WB; ELISA; IP.
<b>Stability</b>	The thermal stability is described by the loss rate. The loss rate was determined by accelerated thermal degradation test, that is, incubate the protein at 37°C for 48h, and no obvious degradation and precipitation were observed. The loss rate is less than 5% within the expiration date under appropriate storage condition.
<b>Storage</b>	Avoid repeated freeze/thaw cycles. Store at 2-8°C for one month. Aliquot and store at

 Tel: 1-631-559-9269    1-516-512-3133

 Email: [info@creative-biomart.com](mailto:info@creative-biomart.com)     Fax: 1-631-938-8127

 45-1 Ramsey Road, Shirley, NY 11967, USA

-80°C for 12 months.

**Storage buffer** Supplied as lyophilized form in PBS, pH7.4, containing 5% trehalose, 0.01% sarcosyl.

**Reconstitution** Reconstitute in sterile PBS, pH7.2-pH7.4.

**Isoelectric Point** 8.2

## GENE INFORMATION

**Gene Name** [Gfer growth factor, augmenter of liver regeneration \[ Mus musculus \(house mouse\) \]](#)

**Official Symbol** [Gfer](#)

**Synonyms** Gfer; growth factor, augmenter of liver regeneration; Alr; ERV1; FAD-linked sulfhydryl oxidase ALR; augmenter of liver regeneration; growth factor, erv1-like (augmenter of liver regeneration)

**Gene ID** [11692](#)

**mRNA Refseq** [NM\\_023040.3](#)

**Protein Refseq** [NP\\_075527.2](#)

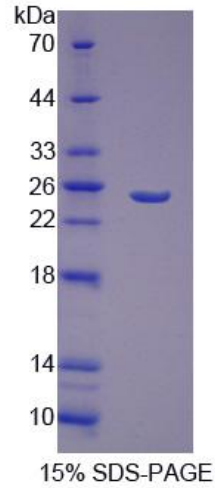
**UniProt ID** [P56213](#)

 Tel: 1-631-559-9269 1-516-512-3133

 Email: [info@creative-biomart.com](mailto:info@creative-biomart.com)  Fax: 1-631-938-8127

 45-1 Ramsey Road, Shirley, NY 11967, USA

**SDS-PAGE**



 Tel: 1-631-559-9269 1-516-512-3133

 Email: [info@creative-biomart.com](mailto:info@creative-biomart.com)  Fax: 1-631-938-8127

 45-1 Ramsey Road, Shirley, NY 11967, USA