

## Recombinant Rat Gfm2 protein, His & T7-tagged

**Cat. No.** Gfm2-1733R    **Lot. No.** (See product label)

### SPECIFICATION

<b>Product Overview</b>	Recombinant Rat Gfm2 aa. (Asn569~Leu779 (Accession # Q5BJP6)) fused with N-terminal His & T7 tag was produced in E. coli cells.
<b>Species</b>	Rat
<b>Source</b>	E.coli
<b>ProteinLength</b>	Asn569~Leu779
<b>Form</b>	Freeze-dried powder
<b>Molecular Mass</b>	30kDa as determined by SDS-PAGE reducing conditions.
<b>Endotoxin</b>	<1.0EU per 1ug (determined by the LAL method)
<b>Purity</b>	>90%
<b>Applications</b>	SDS-PAGE; WB; ELISA; IP.
<b>Stability</b>	The thermal stability is described by the loss rate. The loss rate was determined by accelerated thermal degradation test, that is, incubate the protein at 37°C for 48h, and no obvious degradation and precipitation were observed. The loss rate is less than 5% within the expiration date under appropriate storage condition.
<b>Storage</b>	Avoid repeated freeze/thaw cycles. Store at 2-8°C for one month. Aliquot and store at

 Tel: 1-631-559-9269    1-516-512-3133

 Email: [info@creative-biomart.com](mailto:info@creative-biomart.com)     Fax: 1-631-938-8127

 45-1 Ramsey Road, Shirley, NY 11967, USA

-80°C for 12 months.

**Storage buffer**

Supplied as lyophilized form in 20mM Tris, 150mM NaCl, pH8.0, containing 1mM EDTA, 1mM DTT, 0.01% sarcosyl, 5% trehalose, and preservative.

**Reconstitution**

Reconstitute in sterile ddH<sub>2</sub>O.

**Isoelectric Point**

5.6

## GENE INFORMATION

**Gene Name**

Gfm2 G elongation factor, mitochondrial 2 [ *Rattus norvegicus* (Norway rat) ]

**Official Symbol**

Gfm2

**Synonyms**

Gfm2; G elongation factor, mitochondrial 2; RGD1309854; ribosome-releasing factor 2, mitochondrial; EF-G2mt; RRF2mt; elongation factor G 2, mitochondrial; mEF-G 2

**Gene ID**

294672

**mRNA Refseq**

NM\_001100665.1

**Protein Refseq**

NP\_001094135.1

**UniProt ID**

Q5BJP6

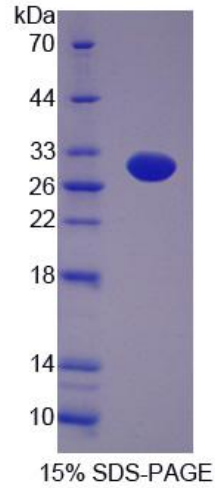
 Tel: 1-631-559-9269 1-516-512-3133

 Email: [info@creative-biomart.com](mailto:info@creative-biomart.com)  Fax: 1-631-938-8127

 45-1 Ramsey Road, Shirley, NY 11967, USA



SDS-PAGE



Tel: 1-631-559-9269 1-516-512-3133

Email: [info@creative-biomart.com](mailto:info@creative-biomart.com) Fax: 1-631-938-8127

45-1 Ramsey Road, Shirley, NY 11967, USA