

Recombinant Mouse Gfra1 protein, His & GST-tagged

Cat. No. Gfra1-1855M **Lot. No.** (See product label)

SPECIFICATION

Product Overview	Recombinant Mouse Gfra1 aa. (Glu239~Asp350 (Accession # P97785)) fused with N-terminal His & GST tag was produced in E. coli cells.
Species	Mouse
Source	E.coli
ProteinLength	Glu239~Asp350
Description	This gene encodes a transmembrane protein that functions as the receptor for glial cell line derived neurotrophic factor (GDNF). The encoded protein undergoes proteolytic processing to generate a glycosylphosphatidylinositol-anchored cell surface coreceptor that forms a complex with the Ret tyrosine kinase in GDNF signaling pathway. Mice lacking the encoded protein exhibit deficits in the kidneys, the enteric nervous system, and spinal motor and sensory neurons similar mice deficient in GDNF or Ret.
Form	Freeze-dried powder
Molecular Mass	Predicted Molecular Mass: 42.4kDa
Endotoxin	<1.0EU per 1ug (determined by the LAL method)
Purity	>95%
Applications	SDS-PAGE; WB; ELISA; IP.

 Tel: 1-631-559-9269 1-516-512-3133

 Email: info@creative-biomart.com  Fax: 1-631-938-8127

 45-1 Ramsey Road, Shirley, NY 11967, USA

Stability	The thermal stability is described by the loss rate. The loss rate was determined by accelerated thermal degradation test, that is, incubate the protein at 37°C for 48h, and no obvious degradation and precipitation were observed. The loss rate is less than 5% within the expiration date under appropriate storage condition.
Storage	Avoid repeated freeze/thaw cycles. Store at 2-8°C for one month. Aliquot and store at -80°C for 12 months.
Storage buffer	Supplied as lyophilized form in PBS, pH7.4, containing 5% trehalose, 0.01% sarcosyl.
Reconstitution	Reconstitute in sterile PBS, pH7.2-pH7.4.
Isoelectric Point	4.6

GENE INFORMATION

Gene Name	Gfra1 glial cell line derived neurotrophic factor family receptor alpha 1 [Mus musculus (house mouse)]
Official Symbol	Gfra1
Synonyms	Gfra1; glial cell line derived neurotrophic factor family receptor alpha 1; AU042498; GDNF family receptor alpha-1; GDNFR-alpha-1; GFR alpha-1; TGF-beta-related neurotrophic factor receptor 1
Gene ID	14585
mRNA Refseq	NM_001285457.2
Protein Refseq	NP_001272386.1

 Tel: 1-631-559-9269 1-516-512-3133

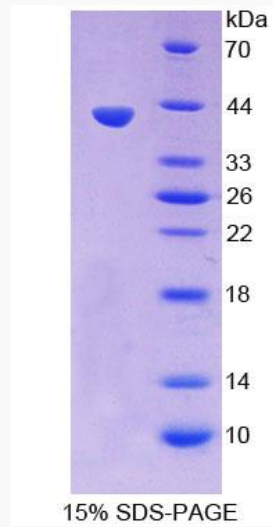
 Email: info@creative-biomart.com  Fax: 1-631-938-8127

 45-1 Ramsey Road, Shirley, NY 11967, USA

UniProt ID

P97785

SDS-PAGE



 Tel: 1-631-559-9269 1-516-512-3133

 Email: info@creative-biomart.com  Fax: 1-631-938-8127

 45-1 Ramsey Road, Shirley, NY 11967, USA