

## Recombinant Mouse Gfra2 Protein, His-tagged

Cat. No. Gfra2-360M Lot. No. (See product label)

### SPECIFICATION

<b>Product Overview</b>	Recombinant Mouse Gfra2(Thr117~Pro314) fused with His tag at N-terminal was expressed in E. coli.
<b>Species</b>	Mouse
<b>Source</b>	E.coli
<b>ProteinLength</b>	Thr117~Pro314
<b>Description</b>	<p>The protein encoded by this gene is part of the receptor complex that transduces glial cell-derived neurotrophic factor and neurturin signals by mediating autophosphorylation and activation of the RET receptor. Mice lacking this protein are viable and fertile but display growth retardation attributed to impaired salivary and pancreatic secretion and innervation deficits in the intestinal tract. In addition, knockout mice display neural defects including a failure to initiate outgrowth of dorsal ganglion root neurons, demonstrating a requirement in neuronal differentiation of these cells. Alternative splicing results in multiple transcript variants encoding different isoforms.</p>
<b>Form</b>	PBS, pH7.4, containing 0.01% SKL, 1mM DTT, 5% Trehalose and Proclin300.
<b>Molecular Mass</b>	26.2kDa
<b>Endotoxin</b>	<1.0EU per 1ug (determined by the LAL method)

 Tel: 1-631-559-9269 1-516-512-3133

 Email: [info@creative-biomart.com](mailto:info@creative-biomart.com)  Fax: 1-631-938-8127

 45-1 Ramsey Road, Shirley, NY 11967, USA

<b>Purity</b>	> 95%
<b>Applications</b>	Positive Control; Immunogen; SDS-PAGE; WB. If bio-activity of the protein is needed, please check active protein
<b>Stability</b>	The thermal stability is described by the loss rate. The loss rate was determined by accelerated thermal degradation test, that is, incubate the protein at 37 centigrade for 48h, and no obvious degradation and precipitation were observed. The loss rate is less than 5% within the expiration date under appropriate storage condition.
<b>Storage</b>	Avoid repeated freeze/thaw cycles. Store at 2-8 centigrade for one month. Aliquot and store at -80 centigrade for 12 months.
<b>Reconstitution</b>	Reconstitute in PBS or others

## GENE INFORMATION

<b>Gene Name</b>	<a href="#">Gfra2 glial cell line derived neurotrophic factor family receptor alpha 2 [ Mus musculus ]</a>
<b>Official Symbol</b>	<a href="#">Gfra2</a>
<b>Synonyms</b>	GFRA2; glial cell line derived neurotrophic factor family receptor alpha 2; GDNF family receptor alpha-2; GDNFR-beta; NTNR-alpha; GFR alpha 2; GFR alpha-2; GFR-alpha-2; NRTNR-alpha; GDNFR-alpha-2; GDNF receptor beta; GDNF receptor alpha-2; neurturin receptor alpha; TGF-beta-related neurotrophic factor receptor 2;
<b>Gene ID</b>	<a href="#">14586</a>
<b>mRNA Refseq</b>	<a href="#">NM_008115</a>

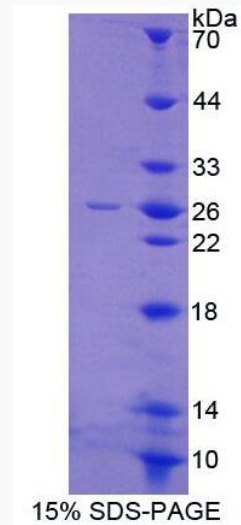
 Tel: 1-631-559-9269 1-516-512-3133

 Email: [info@creative-biomart.com](mailto:info@creative-biomart.com)  Fax: 1-631-938-8127

 45-1 Ramsey Road, Shirley, NY 11967, USA

Protein Refseq NP\_032141

UniProt ID O08842



 Tel: 1-631-559-9269 1-516-512-3133

 Email: [info@creative-biomart.com](mailto:info@creative-biomart.com)  Fax: 1-631-938-8127

 45-1 Ramsey Road, Shirley, NY 11967, USA