

Recombinant Mouse Gfra2 Protein, His-tagged

Cat. No. Gfra2-947M **Lot. No.** (See product label)

SPECIFICATION

Product Overview	Recombinant Mouse Gfra2 Protein (Ser22-Ser443) with His tag was expressed in 293F.
Species	Mouse
Source	HEK293
ProteinLength	Ser22-Ser443
Description	The protein encoded by this gene is part of the receptor complex that transduces glial cell-derived neurotrophic factor and neurturin signals by mediating autophosphorylation and activation of the RET receptor. Mice lacking this protein are viable and fertile but display growth retardation attributed to impaired salivary and pancreatic secretion and innervation deficits in the intestinal tract. In addition, knockout mice display neural defects including a failure to initiate outgrowth of dorsal ganglion root neurons, demonstrating a requirement in neuronal differentiation of these cells. Alternative splicing results in multiple transcript variants encoding different isoforms.
Form	Freeze-dried powder
Molecular Mass	Predicted Molecular Mass: 48.7 kDa; Accurate Molecular Mass: 72 kDa
Purity	> 90%

 Tel: 1-631-559-9269 1-516-512-3133

 Email: info@creative-biomart.com  Fax: 1-631-938-8127

 45-1 Ramsey Road, Shirley, NY 11967, USA

Applications	Positive Control; Immunogen; SDS-PAGE; WB.
Stability	The thermal stability is described by the loss rate. The loss rate was determined by accelerated thermal degradation test, that is, incubate the protein at 37 centigrade for 48h, and no obvious degradation and precipitation were observed. The loss rate is less than 5% within the expiration date under appropriate storage condition.
Storage	Avoid repeated freeze/thaw cycles. Store at 2-8 centigrade for one month. Aliquot and store at -80 centigrade for 12 months.
Storage Buffer	20mM Tris, 150mM NaCl, pH8.0, containing 1mM EDTA, 1mM DTT, 0.01% SKL, 5% Trehalose and Proclin300.
Reconstitution	Reconstitute in 20mM Tris, 150mM NaCl (pH8.0) to a concentration of 0.1-1.0 mg/mL. Do not vortex.

GENE INFORMATION

Gene Name	Gfra2 glial cell line derived neurotrophic factor family receptor alpha 2 [Mus musculus (house mouse)]
Official Symbol	Gfra2
Synonyms	GFRA2; glial cell line derived neurotrophic factor family receptor alpha 2; GDNF family receptor alpha-2; GDNFR-beta; NTN- α ; GFR alpha 2; GFR alpha-2; GFR-alpha-2; NRTN- α ; GDNFR-alpha-2; GDNF receptor beta; GDNF receptor alpha-2; neurturin receptor alpha; TGF-beta-related neurotrophic factor receptor 2;
Gene ID	14586
mRNA Refseq	NM_008115

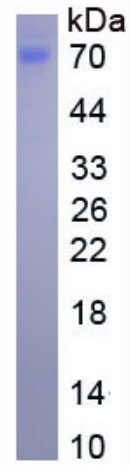
 Tel: 1-631-559-9269 1-516-512-3133

 Email: info@creative-biomart.com  Fax: 1-631-938-8127

 45-1 Ramsey Road, Shirley, NY 11967, USA

Protein Refseq NP_032141

UniProt ID O08842



Tel: 1-631-559-9269 1-516-512-3133

Email: info@creative-biomart.com Fax: 1-631-938-8127

45-1 Ramsey Road, Shirley, NY 11967, USA