

Recombinant Mouse Gfral protein, His-Avi-tagged

Cat. No. Gfral-060M **Lot. No.** (See product label)

SPECIFICATION

Product Overview	Recombinant Mouse Gfral protein(Q6SJE0-1)(Gln20-Glu350), fused with N-terminal His and Avi tag, was expressed in HEK293.
Species	Mouse
Source	HEK293
ProteinLength	Gln20-Glu350
Tag	N-His-Avi
Form	Lyophilized from 0.22µm filtered solution in PBS (pH 7.4). Normally 8% trehalose is added as protectant before lyophilization.
Bio-activity	Immobilized Mouse GFRAL, His Tag at 2 ug/ml (100 ul/well) on the plate. Dose response curve for Mouse GDF15, hFc Tag with the EC50 of 3.0 ng/ml determined by ELISA.
Molecular Mass	The protein has a predicted MW of 40.1 kDa. Due to glycosylation, the protein migrates to 48-60 kDa based on Tris-Bis PAGE result.
Endotoxin	Less than 1EU per µg by the LAL method.
Purity	> 95% as determined by Tris-Bis PAGE;> 95% as determined by HPLC

 Tel: 1-631-559-9269 1-516-512-3133

 Email: info@creative-biomart.com  Fax: 1-631-938-8127

 45-1 Ramsey Road, Shirley, NY 11967, USA

Storage Reconstituted protein stable at -80°C for 12 months, 4°C for 1 week. Use a manual defrost freezer and avoid repeated freeze-thaw cycles.

Reconstitution Centrifuge tubes before opening. Reconstituting to a concentration more than 100 µg/ml is recommended. Dissolve the lyophilized protein in distilled water.

GENE INFORMATION

Gene Name [Gfral GDNF family receptor alpha like \[Mus musculus \]](#)

Official Symbol [Gfral](#)

Synonyms GFRAL; GDNF family receptor alpha like; GDNF family receptor alpha-like; GDNF receptor alpha-like; Gral; AY457637;

Gene ID [404194](#)

mRNA Refseq [NM_205844](#)

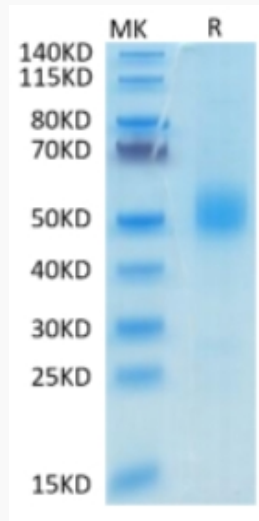
Protein Refseq [NP_995316](#)

 Tel: 1-631-559-9269 1-516-512-3133

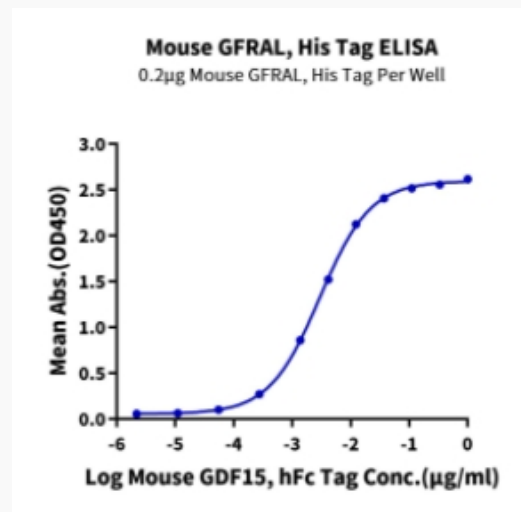
 Email: info@creative-biomart.com  Fax: 1-631-938-8127

 45-1 Ramsey Road, Shirley, NY 11967, USA

Tris-Bis PAGE



ELISA Data



Tel: 1-631-559-9269 1-516-512-3133

Email: info@creative-biomart.com Fax: 1-631-938-8127

45-1 Ramsey Road, Shirley, NY 11967, USA