

Recombinant Mouse Gfral Protein, Gln20-Glu350, N-His-Avi tagged, Biotinylated

Cat. No. Gfral-264M Lot. No. (See product label)

SPECIFICATION

Product Overview	Recombinant mouse GFRAL/GFR alpha-like-N-His-Avi protein was developed from HEK293 and has a target region of N-His-Avi.
Species	Mouse
Source	HEK293
ProteinLength	Gln20-Glu350
Description	Enables glial cell-derived neurotrophic factor receptor activity and receptor tyrosine kinase binding activity. Involved in positive regulation of MAPK cascade and reduction of food intake in response to dietary excess. Acts upstream of or within negative regulation of extrinsic apoptotic signaling pathway in absence of ligand; negative regulation of neuron apoptotic process; and stress-activated protein kinase signaling cascade. Located in plasma membrane. Orthologous to human GFRAL (GDNF family receptor alpha like).
Conjugation/Label	Biotin
Form	Lyophilised
Endotoxin	Endotoxin level was found to be less than 0.1 ng/μg (1 EU/μg).
Notes	FOR RESEARCH USE ONLY (RUO).

 Tel: 1-631-559-9269 1-516-512-3133

 Email: info@creative-biomart.com  Fax: 1-631-938-8127

 45-1 Ramsey Road, Shirley, NY 11967, USA

Storage	The lyophilized protein is stable for at least 1 year from date of receipt at -20 centigrade.
Storage Buffer	Lyophilised from 0.2 µm filtered PBS solution pH 7.4. Upon receipt centrifuge vial to ensure maximal product extraction, recommended: 20 sec, 5K RPM
Conjugation	Biotin

GENE INFORMATION

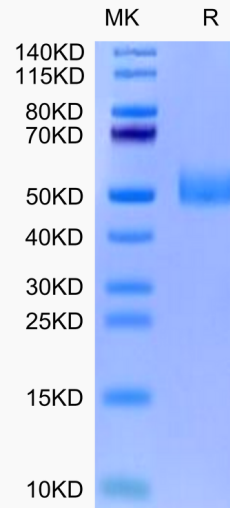
Gene Name	Gfral GDNF family receptor alpha like [<i>Mus musculus</i>]
Official Symbol	Gfral
Synonyms	GFRAL; GDNF family receptor alpha like; GDNF family receptor alpha-like; GDNF receptor alpha-like; Gral; AY457637;
Gene ID	404194
mRNA Refseq	NM_205844
Protein Refseq	NP_995316
UniProt ID	Q6SJD9

 Tel: 1-631-559-9269 1-516-512-3133

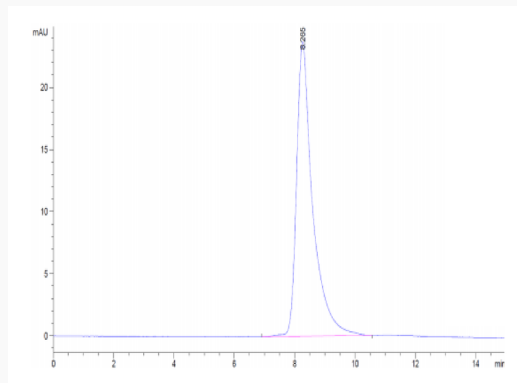
 Email: info@creative-biomart.com  Fax: 1-631-938-8127

 45-1 Ramsey Road, Shirley, NY 11967, USA

**Biotinylated Mouse
GFRAL on Tris-Bis
PAGE under reduced
condition. The purity
is greater than 95%.**



**The purity of
Biotinylated Mouse
GFRAL is greater
than 95% as
determined by SEC-
HPLC.**



**Immobilized
Biotinylated Mouse
GFRAL, His Tag at
0.5 µg/mL (100
µL/Well) on
streptavidin (5
µg/mL) precoated**

 Tel: 1-631-559-9269 1-516-512-3133

 Email: info@creative-biomart.com  Fax: 1-631-938-8127

 45-1 Ramsey Road, Shirley, NY 11967, USA



plate. Dose response
curve for Mouse
GDF15, hFc Tag with
the EC50 of 6.2
ng/mL determined by
ELISA.

 Tel: 1-631-559-9269 1-516-512-3133

 Email: info@creative-biomart.com  Fax: 1-631-938-8127

 45-1 Ramsey Road, Shirley, NY 11967, USA