

Active Recombinant Mouse Gh protein, His-tagged

Cat. No. Gh-783M Lot. No. (See product label)

SPECIFICATION

Product Overview	Active Recombinant Mouse Gh protein(P06880)(28~216 aa), fused with N-terminal His tag, was expressed in E.coli.
Species	Mouse
Source	E.coli
ProteinLength	28-216 aa
Form	Lyophilized from sterile 20mM Tris, 150mM NaCl, pH8.0, containing 1mM EDTA, 1mM DTT, 0.01% SKL, 5% Trehalose and Proclin300.
Bio-activity	<p>Growth hormone (GH), also known as somatotropin is a peptide hormone that stimulates growth, cell reproduction, and cell regeneration in humans and other animals. It is a type of mitogen which is specific only to certain kinds of cells. GH plays a major role in body growth by stimulating the liver and other tissues to secrete IGF-1. It stimulates both the differentiation and proliferation of myoblasts. It also stimulates amino acid uptake and protein synthesis in muscle and other tissues. Besides, Growth Hormone Receptor (GHR) has been identified as an interactor of GH, thus a binding ELISA assay was conducted to detect the interaction of recombinant mouse GH and recombinant mouse GHR. Briefly, GH were diluted serially in PBS, with 0.01% BSA (pH 7.4). Duplicate samples of 100µL were then transferred to GHR-coated microtiter wells and incubated for 2h at 37°C. Wells were washed with PBST and incubated for 1h with anti-GH pAb, then aspirated and washed 3 times. After</p>

 Tel: 1-631-559-9269 1-516-512-3133

 Email: info@creative-biomart.com  Fax: 1-631-938-8127

 45-1 Ramsey Road, Shirley, NY 11967, USA

incubation with HRP labelled secondary antibody, wells were aspirated and washed 3 times. With the addition of substrate solution, wells were incubated 15-25 minutes at 37°C. Finally, add 50µ stop solution to the wells and read at 450nm immediately. The binding activity of GH and GHR was shown, and this effect was in a dose dependent manner.

Molecular Mass 25.4kDa

Purity > 97% as determined by SDS-PAGE.

Storage Avoid repeated freeze/thaw cycles. Store at -20°C for 12 months. Aliquot and store at -80°C for 12 months.

Reconstitution Reconstitute in 20mM Tris, 150mM NaCl (pH8.0) to a concentration of 0.1-1.0 mg/mL. Do not vortex.

GENE INFORMATION

Gene Name Gh growth hormone [*Mus musculus*]

Official Symbol Gh

Synonyms GH; growth hormone; somatotropin; Gh1;

Gene ID 14599

mRNA Refseq NM_008117

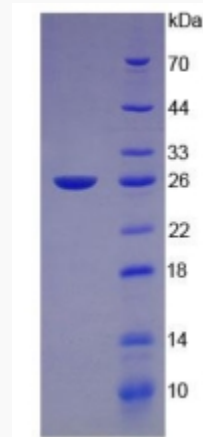
Protein Refseq NP_032143

 Tel: 1-631-559-9269 1-516-512-3133

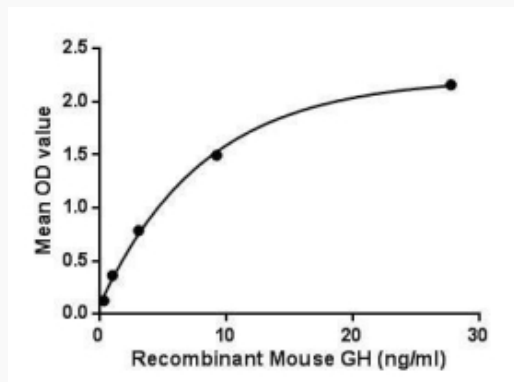
 Email: info@creative-biomart.com  Fax: 1-631-938-8127

 45-1 Ramsey Road, Shirley, NY 11967, USA

SDS-PAGE



Activity



 Tel: 1-631-559-9269 1-516-512-3133

 Email: info@creative-biomart.com  Fax: 1-631-938-8127

 45-1 Ramsey Road, Shirley, NY 11967, USA