

Recombinant Rat Gip protein, His & GST-tagged

Cat. No. Gip-7871R Lot. No. (See product label)

SPECIFICATION

Product Overview	Recombinant Rat Gip aa. (Leu11~Leu124 (Accession # Q06145)) fused with N-terminal His & GST tag was produced in E. coli cells.
Species	Rat
Source	E.coli
ProteinLength	Leu11~Leu124
Form	Freeze-dried powder
Molecular Mass	Predicted Molecular Mass: 45.4kDa
Endotoxin	<1.0EU per 1g (determined by the LAL method)
Purity	>95%
Characteristic	The isoelectric point is 6.5.
Applications	SDS-PAGE; WB; ELISA; IP
Stability	The thermal stability is described by the loss rate. The loss rate was determined by accelerated thermal degradation test, that is, incubate the protein at 37°C for 48h, and no obvious degradation and precipitation were observed. The loss rate is less than 5% within the expiration date under appropriate storage condition.

 Tel: 1-631-559-9269 1-516-512-3133

 Email: info@creative-biomart.com  Fax: 1-631-938-8127

 45-1 Ramsey Road, Shirley, NY 11967, USA

Storage	Avoid repeated freeze/thaw cycles. Store at 2-8°C for one month. Aliquot and store at -80°C for 12 months.
Storage buffer	Supplied as lyophilized form in PBS, pH7.4, containing 5% trehalose, 0.01% sarcosyl
Reconstitution	Reconstitute in sterile PBS, pH7.2-pH7.4.

GENE INFORMATION

Gene Name	Gip gastric inhibitory polypeptide [<i>Rattus norvegicus</i> (Norway rat)]
Official Symbol	Gip
Synonyms	Gludins; RATGLUDINS; Glucose-dependent insulinotropic peptide; glucose-dependent insulinotropic polypeptide; gastric inhibitory polypeptide
Gene ID	25040
mRNA Refseq	NM_019630.3
Protein Refseq	NP_062604.1
UniProt ID	Q06145

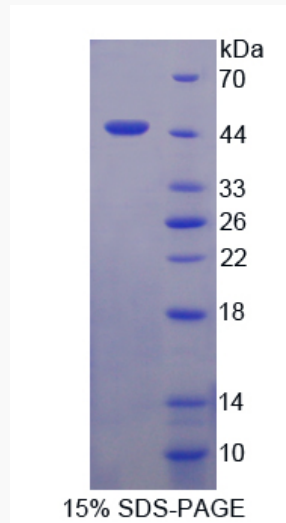
 Tel: 1-631-559-9269 1-516-512-3133

 Email: info@creative-biomart.com  Fax: 1-631-938-8127

 45-1 Ramsey Road, Shirley, NY 11967, USA



SDS-PAGE



Tel: 1-631-559-9269 1-516-512-3133

Email: info@creative-biomart.com Fax: 1-631-938-8127

45-1 Ramsey Road, Shirley, NY 11967, USA