

## Recombinant Mouse Gipr protein, His-tagged

Cat. No. Gipr-4603M Lot. No. (See product label)

### SPECIFICATION

<b>Product Overview</b>	Recombinant Mouse Gipr protein(Q0P543)(19-134aa), fused with C-terminal His tag, was expressed in HEK293.
<b>Species</b>	Mouse
<b>Source</b>	HEK293
<b>ProteinLength</b>	19-134aa
<b>Tag</b>	C-His
<b>Form</b>	Lyophilized from a 0.2 µm filtered PBS, 6% Trehalose, pH 7.4
<b>Bio-activity</b>	Measured by its binding ability in a functional ELISA. Immobilized Mouse Gipr at 2 µg/mL can bind Anti-Mouse Gipr Recombinant Antibody, the EC50 is 8.622-11.36 ng/ml.
<b>Molecular Mass</b>	14.7 kDa
<b>Endotoxin</b>	Less than 1.0 EU/ug as determined by LAL method.
<b>Purity</b>	Greater than 95% as determined by SDS-PAGE.
<b>Storage</b>	Store at -20°C/-80°C upon receipt, aliquoting is necessary for mutiple use. Avoid repeated freeze-thaw cycles.

 Tel: 1-631-559-9269 1-516-512-3133

 Email: [info@creative-biomart.com](mailto:info@creative-biomart.com)  Fax: 1-631-938-8127

 45-1 Ramsey Road, Shirley, NY 11967, USA

**Reconstitution** We recommend that this vial be briefly centrifuged prior to opening to bring the contents to the bottom. Please reconstitute protein in deionized sterile water to a concentration of 0.1-1.0 mg/mL. We recommend to add 5-50% of glycerol (final concentration) and aliquot for long-term storage at -20°C/-80°C.

**AA Sequence** ETDSEGQTTTGELYQRWEHYGQECQKMLETTEPPSGLACNGSFDMYACWNYTAA  
NTTARVSCPWYLPWFRQVSAGFVFRQCGSDGQWGSWRDHTQCENPEKNGAFQD  
QTLILERLQ

## GENE INFORMATION

**Gene Name** [Gipr gastric inhibitory polypeptide receptor \[ Mus musculus \]](#)

**Official Symbol** [Gipr](#)

**Synonyms** GIPR; gastric inhibitory polypeptide receptor; glucose-dependent insulinotropic polypeptide receptor; GIP-R; Gm160; Gm1081;

**Gene ID** [381853](#)

**mRNA Refseq** [NM\\_001080815](#)

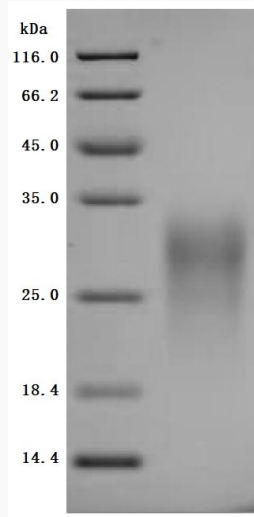
**Protein Refseq** [NP\\_001074284](#)

 Tel: 1-631-559-9269 1-516-512-3133

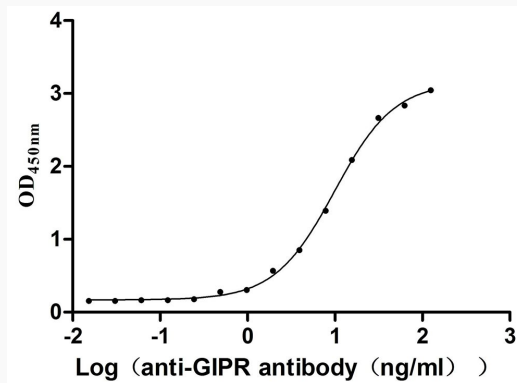
 Email: [info@creative-biomart.com](mailto:info@creative-biomart.com)  Fax: 1-631-938-8127

 45-1 Ramsey Road, Shirley, NY 11967, USA

**SDS-PAGE**



**Activity**



 Tel: 1-631-559-9269 1-516-512-3133

 Email: [info@creative-biomart.com](mailto:info@creative-biomart.com)  Fax: 1-631-938-8127

 45-1 Ramsey Road, Shirley, NY 11967, USA