

Recombinant Rat Gipr protein, His-tagged

Cat. No. Gipr-4651R **Lot. No.** (See product label)

SPECIFICATION

Product Overview	Recombinant Rat Gipr protein(P43219)(19-135 aa), fused with N-terminal His tag, was expressed in Yeast.
Species	Rat
Source	Yeast
ProteinLength	19-135 aa
Form	For liquid formulations, the standard storage buffer consists of a Tris or PBS based solution supplemented with 5-50% glycerol. When provided as lyophilized powder, the product undergoes freeze-drying from a Tris- or PBS-based formulation containing 6% trehalose, adjusted to pH 8.0 prior to the lyophilization process.
Molecular Mass	15.5 kDa
AASequence	RAETDSEGQTTGELYQRWERYGWECQNTLEATEPPPSGLACNGSFDMYACWNYTA ANTTARVSCPWYLPWYRQVAAGFVFRQCGSDGQWGSWRDHTQCENPEKNGAFQ DQKLILERLQ
Purity	Greater than 95% as determined by SDS-PAGE.
Storage	Store at -20°C/-80°C upon receipt, aliquoting is necessary for mutiple use. Avoid repeated freeze-thaw cycles.

 Tel: 1-631-559-9269 1-516-512-3133

 Email: info@creative-biomart.com  Fax: 1-631-938-8127

 45-1 Ramsey Road, Shirley, NY 11967, USA

Reconstitution Please reconstitute protein in deionized sterile water to a concentration of 0.1-1.0 mg/mL. Aliquot for long-term storage at -80°C.

GENE INFORMATION

Gene Name [Gipr gastric inhibitory polypeptide receptor \[Rattus norvegicus \]](#)

Official Symbol [Gipr](#)

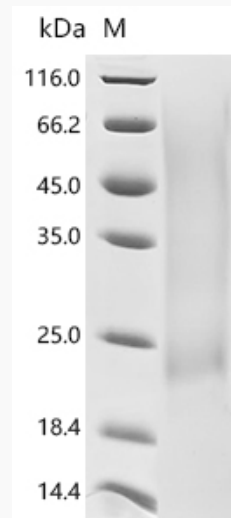
Synonyms GIPR; gastric inhibitory polypeptide receptor; GIP-R; gastric inhibitory peptide receptor; glucose-dependent insulinotropic polypeptide receptor; Gippr; RATGIPPR;

Gene ID [25024](#)

mRNA Refseq [NM_012714](#)

Protein Refseq [NP_036846](#)

SDS-PAGE



 Tel: 1-631-559-9269 1-516-512-3133

 Email: info@creative-biomart.com  Fax: 1-631-938-8127

 45-1 Ramsey Road, Shirley, NY 11967, USA