

Recombinant Rat Gipr protein, His-tagged

Cat. No. Gipr-5643R **Lot. No.** (See product label)

SPECIFICATION

Product Overview	Recombinant Rat Gipr protein(P43219)(19-135aa), fused with C-terminal His tag, was expressed in HEK293.
Species	Rat
Source	HEK293
ProteinLength	19-135aa
Tag	C-His
Form	Lyophilized from a 0.2 µm filtered 20 mM Tris-HCl, 0.5 M NaCl, 6% Trehalose, pH 8.0
Bio-activity	Measured by its binding ability in a functional ELISA. Immobilized Rat Gipr at 2 µg/mL can bind Anti-Mouse Gipr recombinant antibody, the EC50 is 6.946-8.740 ng/ml.
Molecular Mass	14.9 kDa
Endotoxin	Less than 1.0 EU/ug as determined by LAL method.
Purity	Greater than 95% as determined by SDS-PAGE.
Storage	Store at -20°C/-80°C upon receipt, aliquoting is necessary for mutiple use. Avoid repeated freeze-thaw cycles.

 Tel: 1-631-559-9269 1-516-512-3133

 Email: info@creative-biomart.com  Fax: 1-631-938-8127

 45-1 Ramsey Road, Shirley, NY 11967, USA

Reconstitution We recommend that this vial be briefly centrifuged prior to opening to bring the contents to the bottom. Please reconstitute protein in deionized sterile water to a concentration of 0.1-1.0 mg/mL. We recommend to add 5-50% of glycerol (final concentration) and aliquot for long-term storage at -20°C/-80°C.

AA Sequence RAETDSEGQTTGELYQRWERYGWECQNTLEATEPPPSGLACNGSFDMYACWNYTA
ANTTARVSCPWYLPWYRQVAAGFVFRQCGSDGQWGSWRDHTQCENPEKNGAFQ
DQKLILERLQ

GENE INFORMATION

Gene Name [Gipr gastric inhibitory polypeptide receptor \[Rattus norvegicus \]](#)

Official Symbol [Gipr](#)

Synonyms GIPR; gastric inhibitory polypeptide receptor; GIP-R; gastric inhibitory peptide receptor; glucose-dependent insulinotropic polypeptide receptor; Gippr; RATGIPPR;

Gene ID [25024](#)

mRNA Refseq [NM_012714](#)

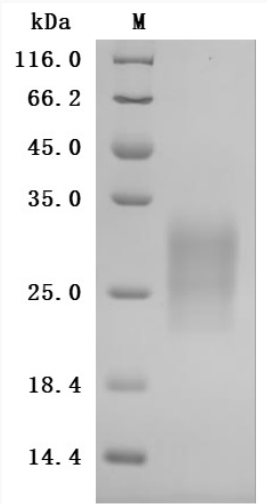
Protein Refseq [NP_036846](#)

 Tel: 1-631-559-9269 1-516-512-3133

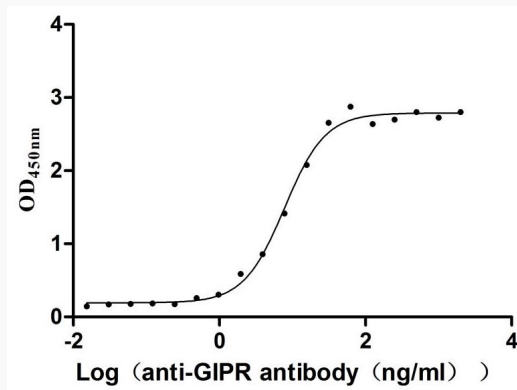
 Email: info@creative-biomart.com  Fax: 1-631-938-8127

 45-1 Ramsey Road, Shirley, NY 11967, USA

SDS-PAGE



Activity



 Tel: 1-631-559-9269 1-516-512-3133

 Email: info@creative-biomart.com  Fax: 1-631-938-8127

 45-1 Ramsey Road, Shirley, NY 11967, USA