

Recombinant Rat Gja1 Protein, His-tagged

Cat. No. Gja1-352R **Lot. No.** (See product label)

SPECIFICATION

Product Overview	Recombinant Rat Gja1(Ser180~Ile382) fused with His tag at N-terminal was expressed in E. coli.
Species	Rat
Source	E.coli
ProteinLength	Ser180~Ile382
Description	Gja1 played an important role in many functions.
Form	20mM Tris, 150mM NaCl,pH8.0, containing 1mM EDTA, 1mM DTT, 0.01% SKL, 5% Trehalose and Proclin300.
Molecular Mass	26.05kDa
Identity	Reconstitute in PBS or others
Endotoxin	<1.0EU per 1g (determined by the LAL method)
Purity	> 95%
Applications	Positive Control; Immunogen; SDS-PAGE; WB. If bio-activity of the protein is needed, please check active protein

 Tel: 1-631-559-9269 1-516-512-3133

 Email: info@creative-biomart.com  Fax: 1-631-938-8127

 45-1 Ramsey Road, Shirley, NY 11967, USA

Stability The thermal stability is described by the loss rate. The loss rate was determined by accelerated thermal degradation test, that is, incubate the protein at 37 centigrade for 48h, and no obvious degradation and precipitation were observed. The loss rate is less than 5% within the expiration date under appropriate storage condition.

Storage Avoid repeated freeze/thaw cycles. Store at 2-8 centigrade for one month. Aliquot and store at -80 centigrade for 12 months.

Reconstitution Reconstitute in PBS or others

GENE INFORMATION

Gene Name [Gja1 gap junction protein, alpha 1 \[Rattus norvegicus \]](#)

Official Symbol [Gja1](#)

Synonyms GJA1; gap junction protein, alpha 1; gap junction alpha-1 protein; connexin 43; connexin-43; gap junction 43 kDa heart protein; gap junction membrane channel protein alpha 1; Cx43; MGC93610;

Gene ID [24392](#)

mRNA Refseq [NM_012567](#)

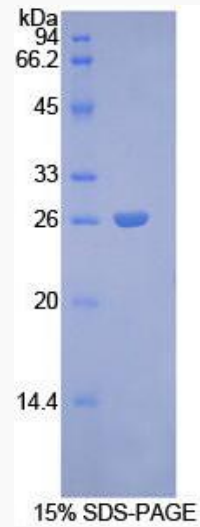
Protein Refseq [NP_036699](#)

UniProt ID [P08050](#)

 Tel: 1-631-559-9269 1-516-512-3133

 Email: info@creative-biomart.com  Fax: 1-631-938-8127

 45-1 Ramsey Road, Shirley, NY 11967, USA



 Tel: 1-631-559-9269 1-516-512-3133

 Email: info@creative-biomart.com  Fax: 1-631-938-8127

 45-1 Ramsey Road, Shirley, NY 11967, USA