

## Recombinant Mouse Gli3 protein, His & T7-tagged

**Cat. No.** Gli3-1708M    **Lot. No.** (See product label)

### SPECIFICATION

<b>Product Overview</b>	Recombinant Mouse Gli3 aa. (Ser303~Glu561 (Accession # Q61602)) fused with N-terminal His & T7 tag was produced in E. coli cells.
<b>Species</b>	Mouse
<b>Source</b>	E.coli
<b>ProteinLength</b>	Ser303~Glu561
<b>Form</b>	Freeze-dried powder
<b>Molecular Mass</b>	Predicted Molecular Mass: 32.5kDa
<b>Endotoxin</b>	<1.0EU per 1ug (determined by the LAL method)
<b>Purity</b>	>95%
<b>Applications</b>	SDS-PAGE; WB; ELISA; IP.
<b>Stability</b>	The thermal stability is described by the loss rate. The loss rate was determined by accelerated thermal degradation test, that is, incubate the protein at 37°C for 48h, and no obvious degradation and precipitation were observed. The loss rate is less than 5% within the expiration date under appropriate storage condition.
<b>Storage</b>	Avoid repeated freeze/thaw cycles. Store at 2-8°C for one month. Aliquot and store at

 Tel: 1-631-559-9269    1-516-512-3133

 Email: [info@creative-biomart.com](mailto:info@creative-biomart.com)     Fax: 1-631-938-8127

 45-1 Ramsey Road, Shirley, NY 11967, USA

-80°C for 12 months.

**Storage buffer** Supplied as lyophilized form in PBS, pH7.4, containing 5% sucrose, 0.01% sarcosyl.

**Reconstitution** Reconstitute in sterile PBS, pH7.2-pH7.4.

**Isoelectric Point** 6.9

## GENE INFORMATION

**Gene Name** [Gli3 GLI-Kruppel family member GLI3 \[ Mus musculus \(house mouse\) \]](#)

**Official Symbol** [Gli3](#)

**Synonyms** Gli3; GLI-Kruppel family member GLI3; Xt; Bph; Pdn; add; GLI3FL; AI854843; AU023367; GLI3-190; transcriptional activator GLI3; GLI3 form of 190 kDa; GLI3 full length protein; anterior digit pattern deformity; brachyphalangy; extra toes; polydactyly Nagoya; zinc finger protein GLI3

**Gene ID** [14634](#)

**mRNA Refseq** [NM\\_008130.2](#)

**Protein Refseq** [NP\\_032156.2](#)

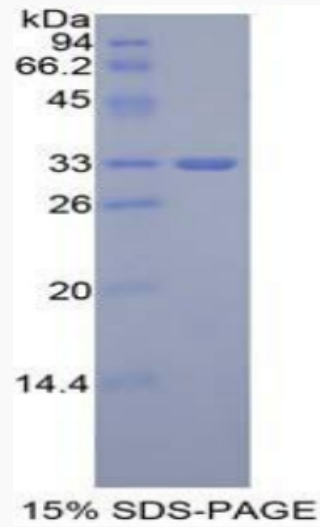
**UniProt ID** [Q61602](#)

 Tel: 1-631-559-9269 1-516-512-3133

 Email: [info@creative-biomart.com](mailto:info@creative-biomart.com)  Fax: 1-631-938-8127

 45-1 Ramsey Road, Shirley, NY 11967, USA

SDS-PAGE



 Tel: 1-631-559-9269 1-516-512-3133

 Email: [info@creative-biomart.com](mailto:info@creative-biomart.com)  Fax: 1-631-938-8127

 45-1 Ramsey Road, Shirley, NY 11967, USA