

## Recombinant Rat Glp1r protein, His-tagged

**Cat. No.** Glp1r-4650R    **Lot. No.** (See product label)

### SPECIFICATION

<b>Product Overview</b>	Recombinant Rat Glp1r protein(P32301)(22-139 aa), fused with N-terminal His tag, was expressed in Yeast.
<b>Species</b>	Rat
<b>Source</b>	Yeast
<b>ProteinLength</b>	22-139 aa
<b>Form</b>	For liquid formulations, the standard storage buffer consists of a Tris or PBS based solution supplemented with 5-50% glycerol. When provided as lyophilized powder, the product undergoes freeze-drying from a Tris- or PBS-based formulation containing 6% trehalose, adjusted to pH 8.0 prior to the lyophilization process.
<b>Molecular Mass</b>	15.6 kDa
<b>AASequence</b>	GPRPQGATVLSLSE TVQKWREYRHQCQRFLTEAPLLATGLFCNRTFDDYACWPDGPG PGSFVNVSCPWYLPWASSVLQGHVYRFCTAEGIW LHKDNSSLPWRDLSECEESKQ GERNSPEE
<b>Purity</b>	Greater than 95% as determined by SDS-PAGE.
<b>Storage</b>	Store at -20°C/-80°C upon receipt, aliquoting is necessary for mutiple use. Avoid repeated freeze-thaw cycles.

 Tel: 1-631-559-9269    1-516-512-3133

 Email: [info@creative-biomart.com](mailto:info@creative-biomart.com)     Fax: 1-631-938-8127

 45-1 Ramsey Road, Shirley, NY 11967, USA

**Reconstitution** Please reconstitute protein in deionized sterile water to a concentration of 0.1-1.0 mg/mL. Aliquot for long-term storage at -80°C.

## GENE INFORMATION

**Gene Name** Glp1r glucagon-like peptide 1 receptor [ *Rattus norvegicus* ]

**Official Symbol** Glp1r

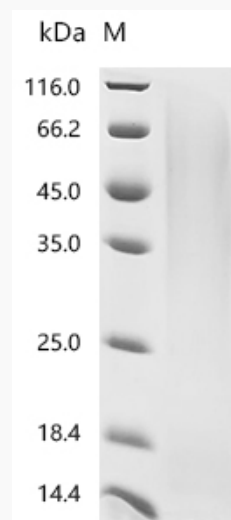
**Synonyms** GLP1R; glucagon-like peptide 1 receptor; GLP-1R; GLP-1-R; GLP-1 receptor; pancreatic beta cell receptor for the gluco-incretin hormone glucagon-like peptide 1; Glip; RATGL1RCP;

**Gene ID** 25051

**mRNA Refseq** NM\_012728

**Protein Refseq** NP\_036860

## SDS-PAGE



 Tel: 1-631-559-9269 1-516-512-3133

 Email: [info@creative-biomart.com](mailto:info@creative-biomart.com)  Fax: 1-631-938-8127

 45-1 Ramsey Road, Shirley, NY 11967, USA